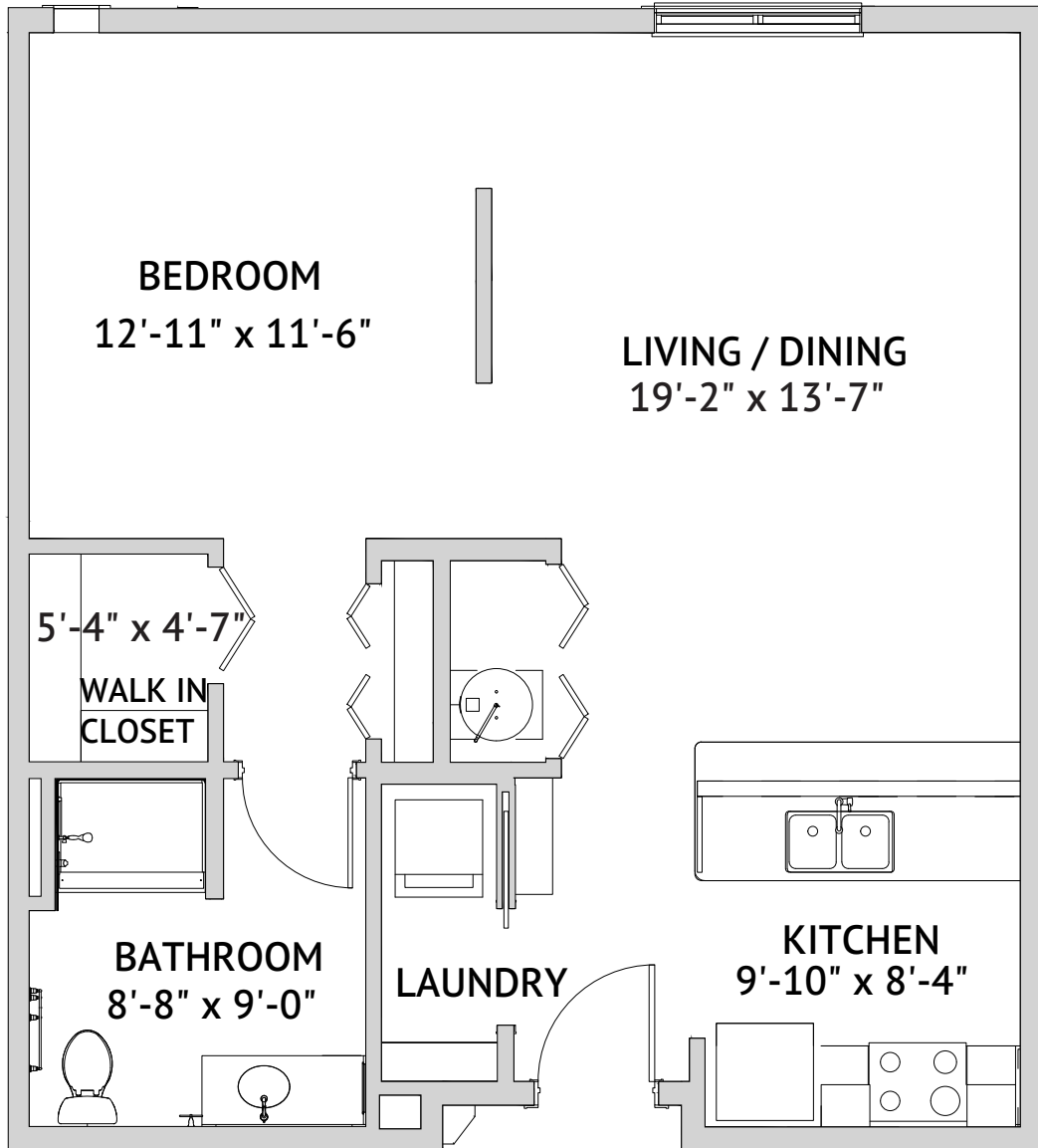


**INLET -STUDIO**  
705 Square Feet

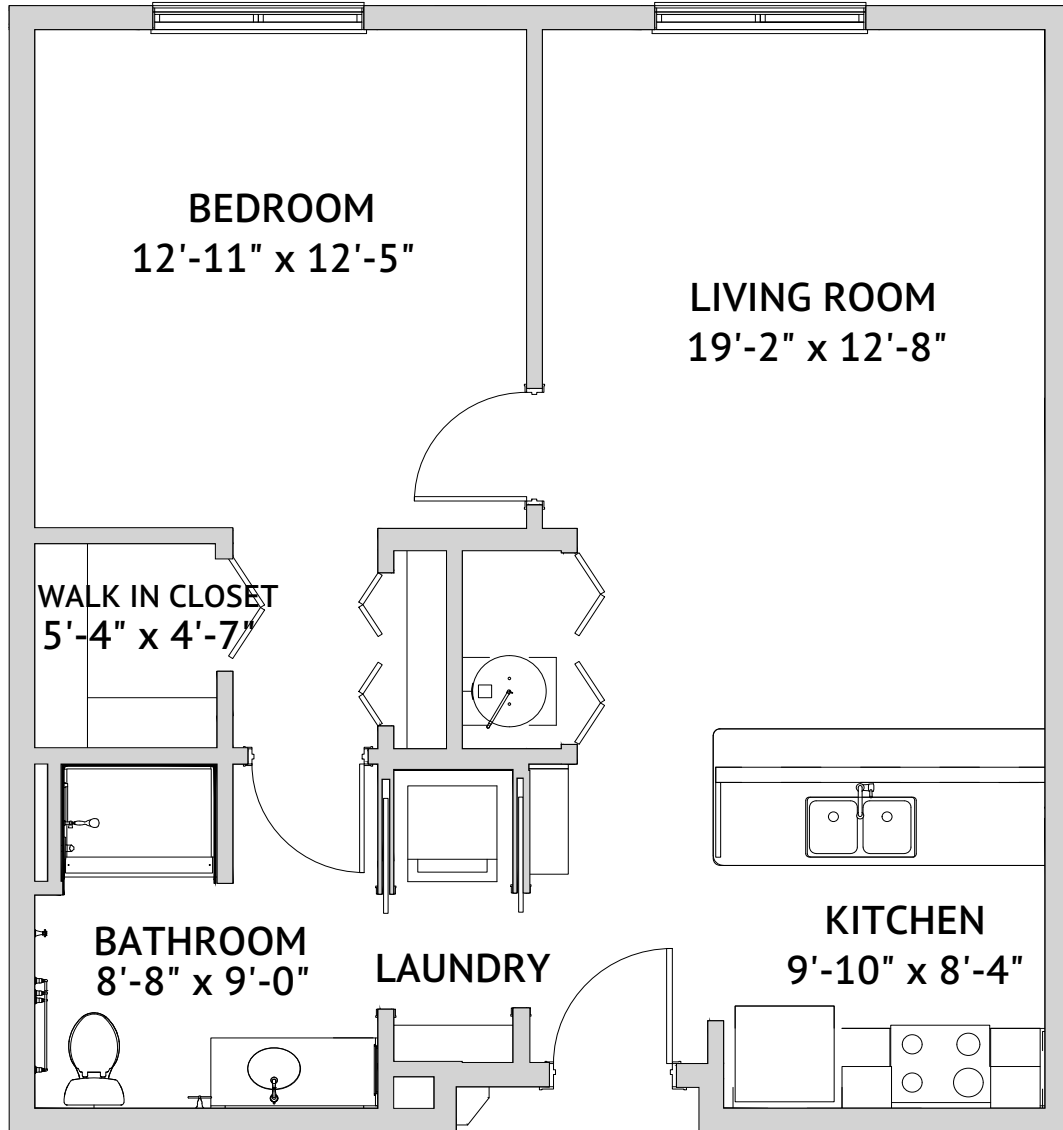


Floor plans are not to scale and are shown for comparative purposes only.  
Actual apartment floor plans may have minor variations.

WATERSOUND is a service mark of The St. Joe Company and is used under license.  
FOUNTAINS is a service mark of Watermark Retirement Communities, LLC and is used under license.

335 Watersound Parkway North • Inlet Beach, FL 32413 • 850-846-3900 • [watersoundfountains.com](http://watersoundfountains.com)

**SEASIDE – ONE BEDROOM**  
705 Square Feet

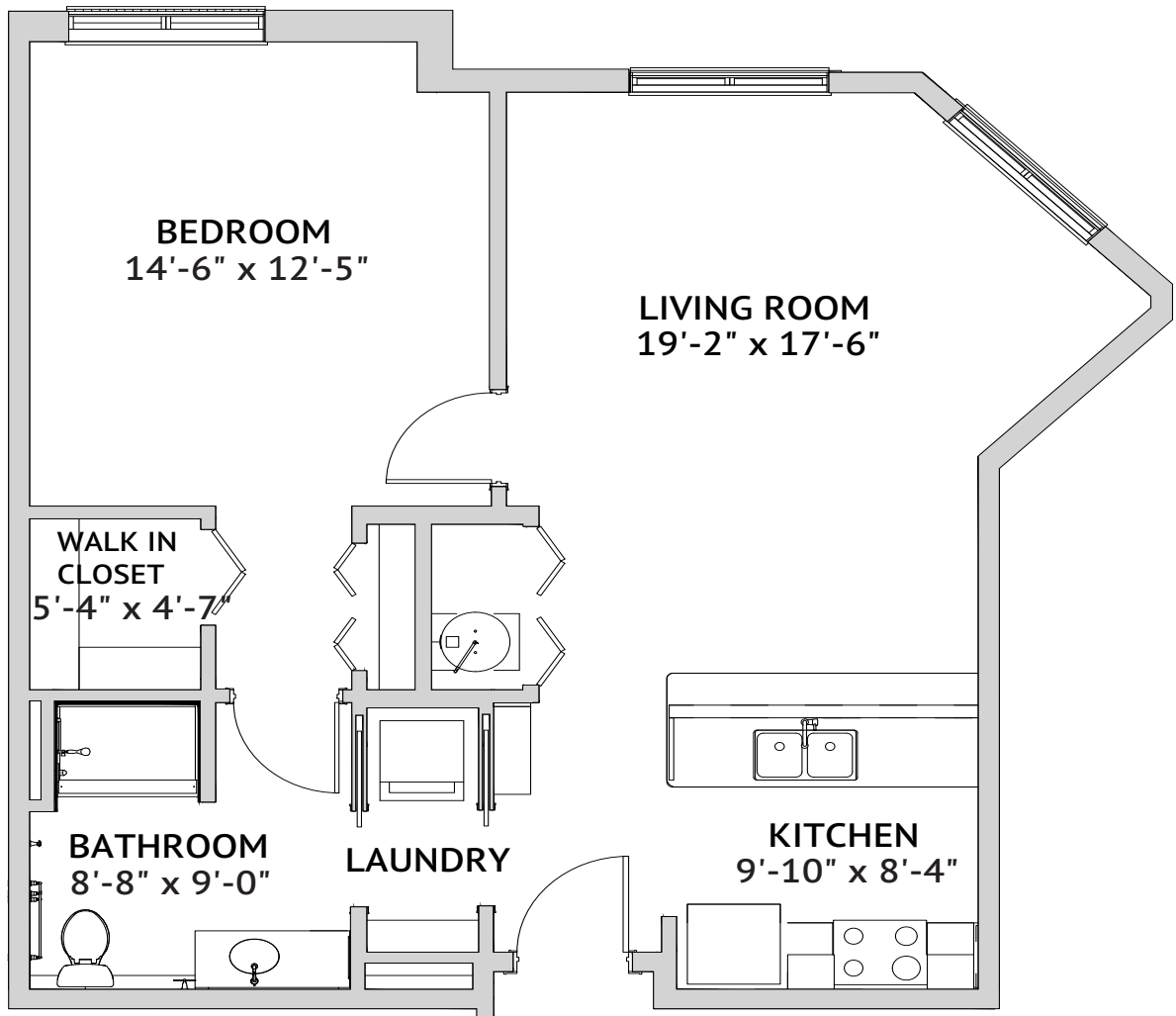


Floor plans are not to scale and are shown for comparative purposes only.  
Actual apartment floor plans may have minor variations.

WATERSOUND is a service mark of The St. Joe Company and is used under license.  
FOUNTAINS is a service mark of Watermark Retirement Communities, LLC and is used under license.

335 Watersound Parkway North • Inlet Beach, FL 32413 • 850-846-3900 • [watersoundfountains.com](http://watersoundfountains.com)

**SEASIDE – ONE BEDROOM**  
745 Square Feet

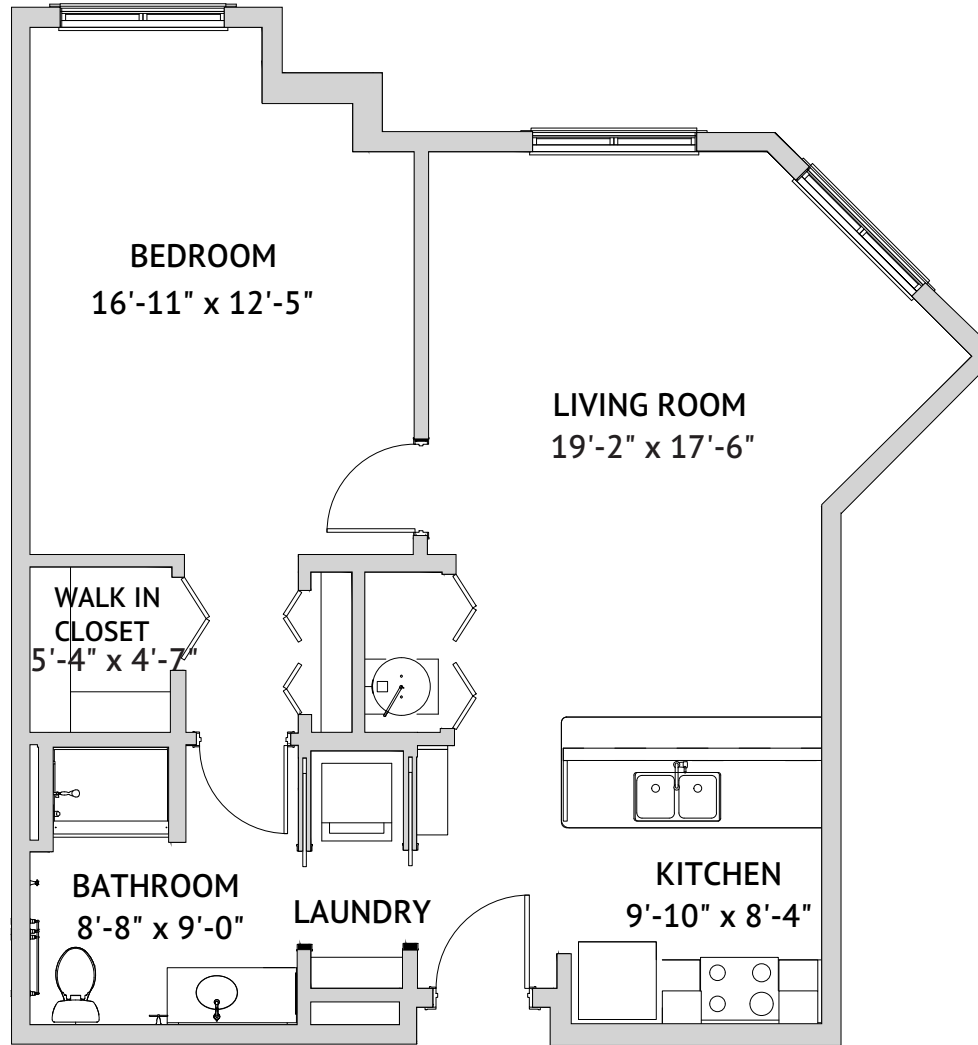


Floor plans are not to scale and are shown for comparative purposes only.  
Actual apartment floor plans may have minor variations.

WATERSOUND is a service mark of The St. Joe Company and is used under license.  
FOUNTAINS is a service mark of Watermark Retirement Communities, LLC and is used under license.

335 Watersound Parkway North • Inlet Beach, FL 32413 • 850-846-3900 • [watersoundfountains.com](http://watersoundfountains.com)

**SEASIDE – ONE BEDROOM**  
760 Square Feet

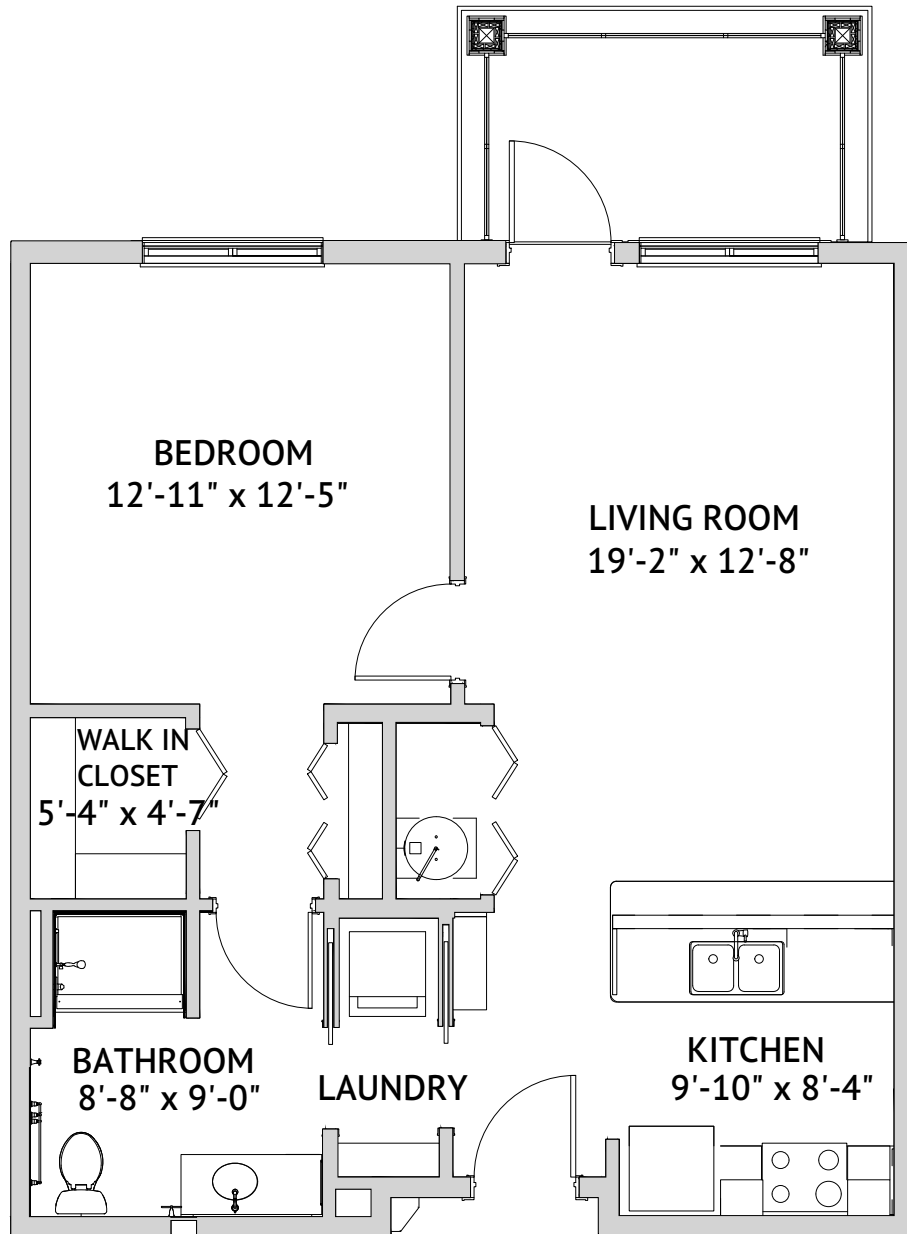


Floor plans are not to scale and are shown for comparative purposes only.  
Actual apartment floor plans may have minor variations.

WATERSOUND is a service mark of The St. Joe Company and is used under license.  
FOUNTAINS is a service mark of Watermark Retirement Communities, LLC and is used under license.

335 Watersound Parkway North • Inlet Beach, FL 32413 • 850-846-3900 • [watersoundfountains.com](http://watersoundfountains.com)

**SEASIDE – ONE BEDROOM**  
705 Square Feet

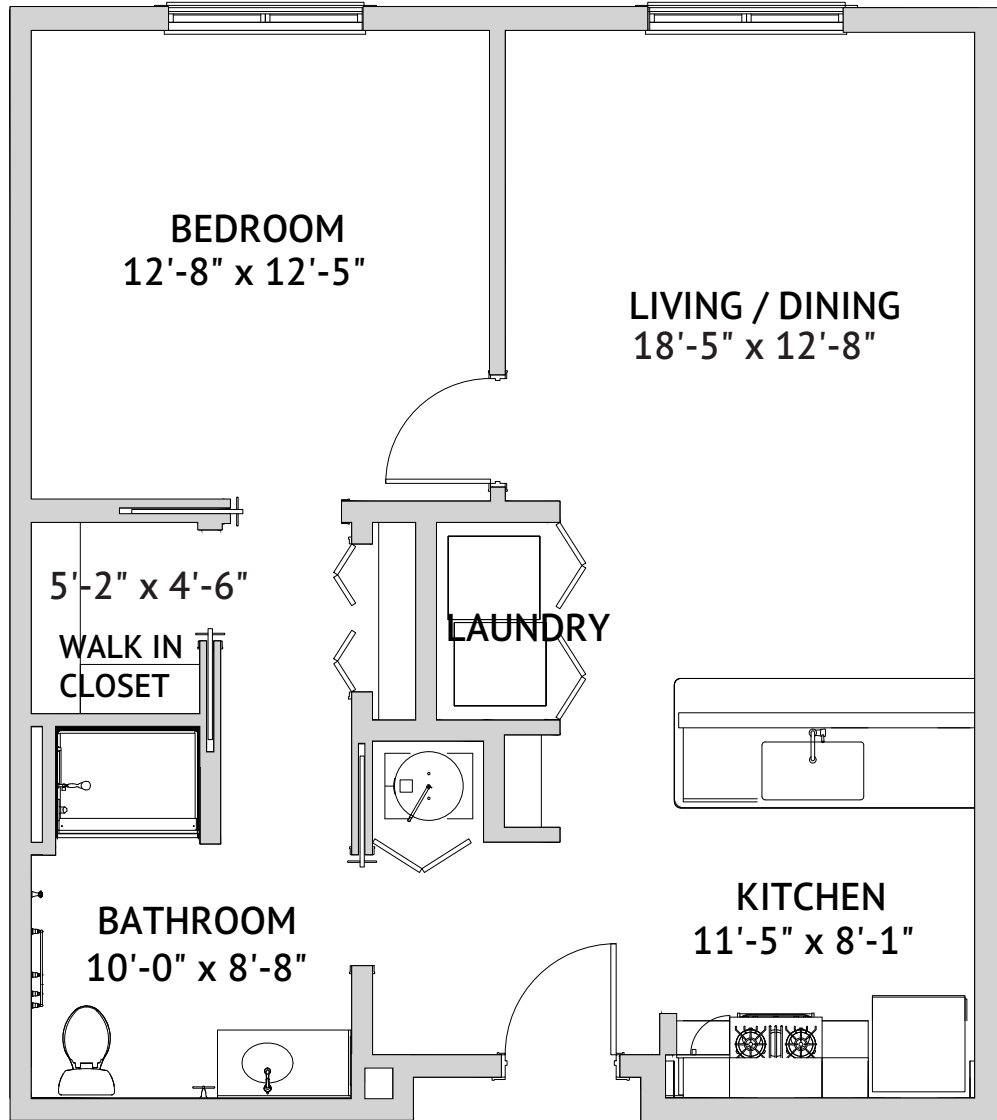


Floor plans are not to scale and are shown for comparative purposes only.  
Actual apartment floor plans may have minor variations.

WATERSOUND is a service mark of The St. Joe Company and is used under license.  
FOUNTAINS is a service mark of Watermark Retirement Communities, LLC and is used under license.

335 Watersound Parkway North • Inlet Beach, FL 32413 • 850-846-3900 • [watersoundfountains.com](http://watersoundfountains.com)

**SEASIDE – ONE BEDROOM**  
705 Square Feet

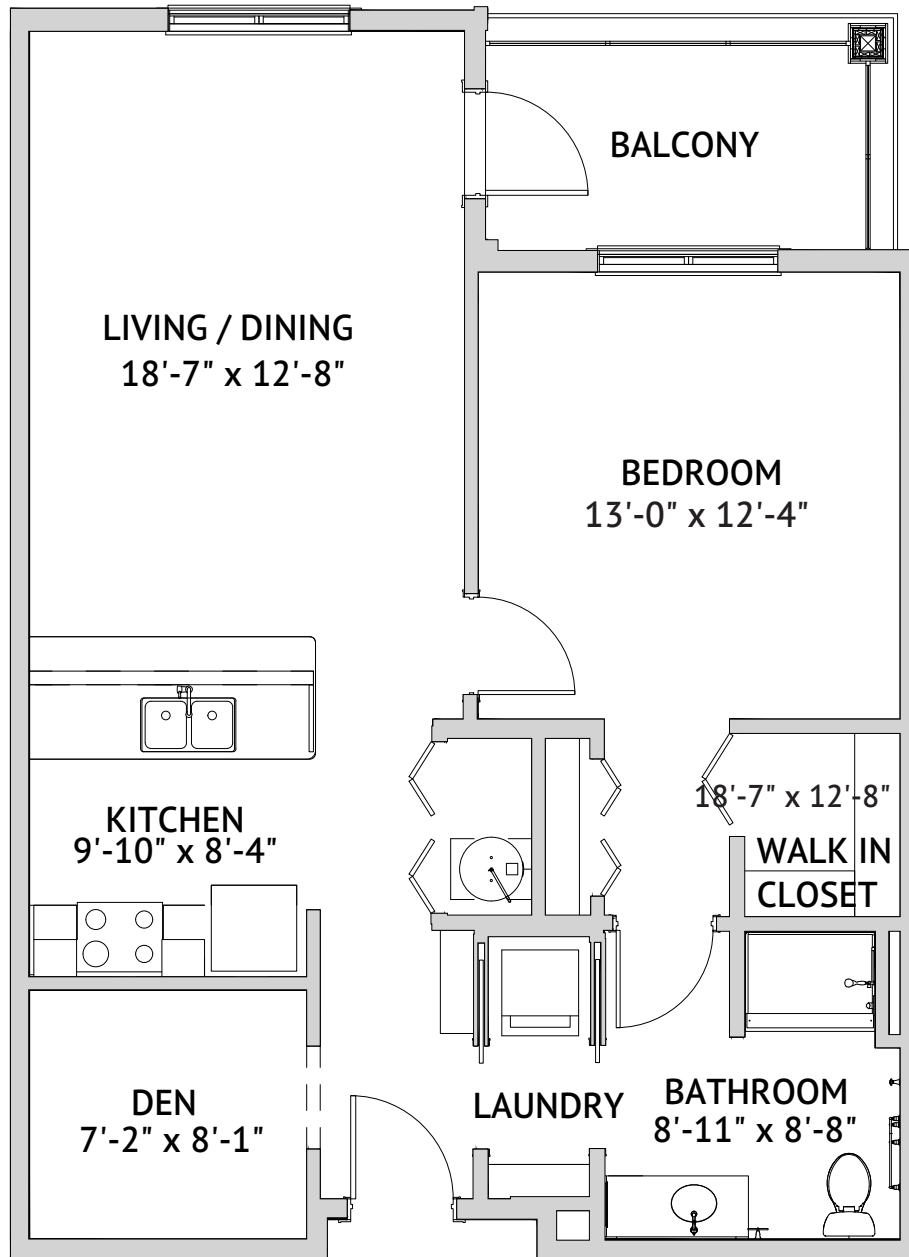


Floor plans are not to scale and are shown for comparative purposes only.  
Actual apartment floor plans may have minor variations.

WATERSOUND is a service mark of The St. Joe Company and is used under license.  
FOUNTAINS is a service mark of Watermark Retirement Communities, LLC and is used under license.

335 Watersound Parkway North • Inlet Beach, FL 32413 • 850-846-3900 • [watersoundfountains.com](http://watersoundfountains.com)

**SEASIDE – ONE BEDROOM**  
795 Square Feet

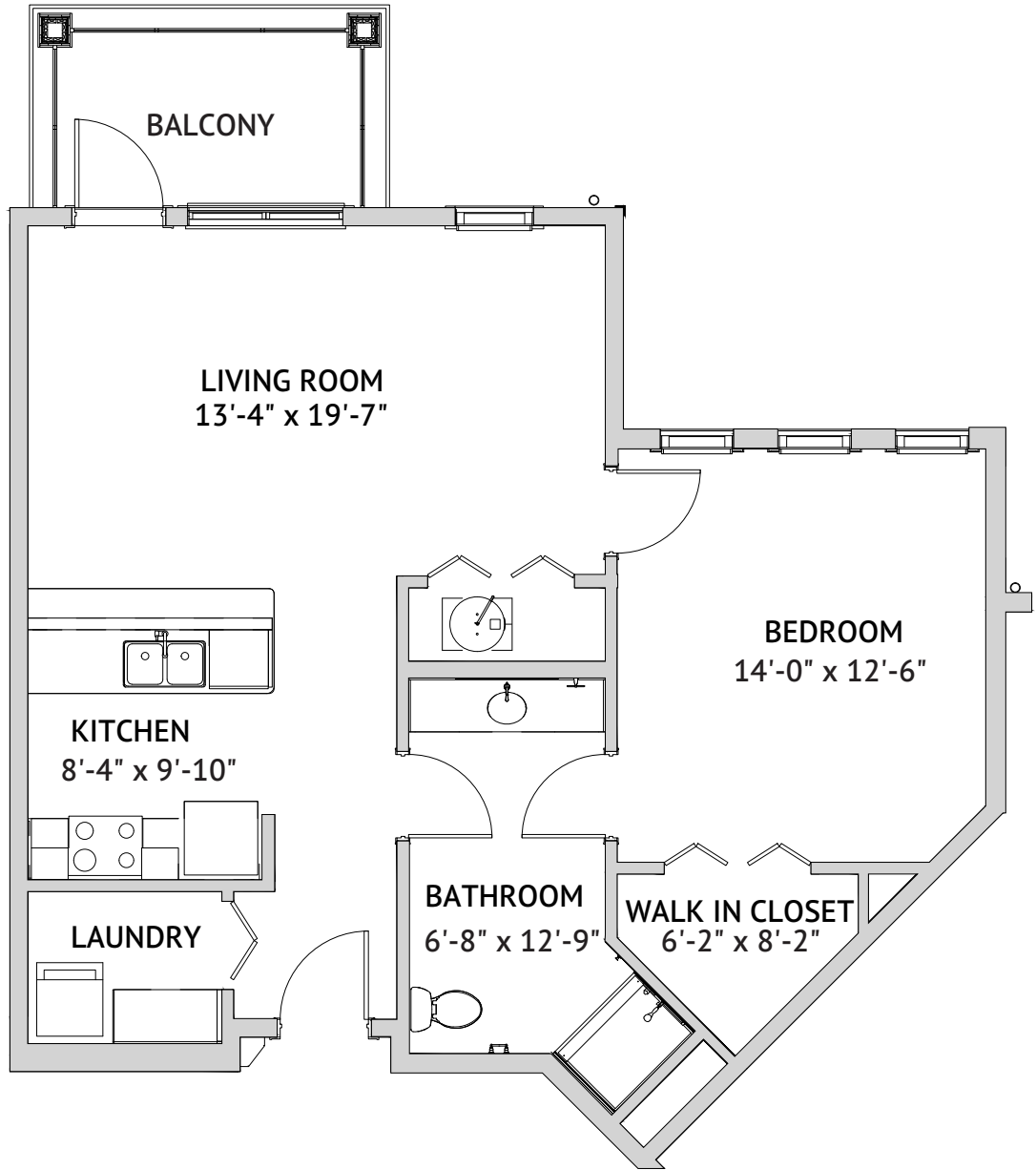


Floor plans are not to scale and are shown for comparative purposes only.  
Actual apartment floor plans may have minor variations.

WATERSOUND is a service mark of The St. Joe Company and is used under license.  
FOUNTAINS is a service mark of Watermark Retirement Communities, LLC and is used under license.

335 Watersound Parkway North • Inlet Beach, FL 32413 • 850-846-3900 • [watersoundfountains.com](http://watersoundfountains.com)

**ROSEMARY – LARGE ONE BEDROOM**  
822 Square Feet



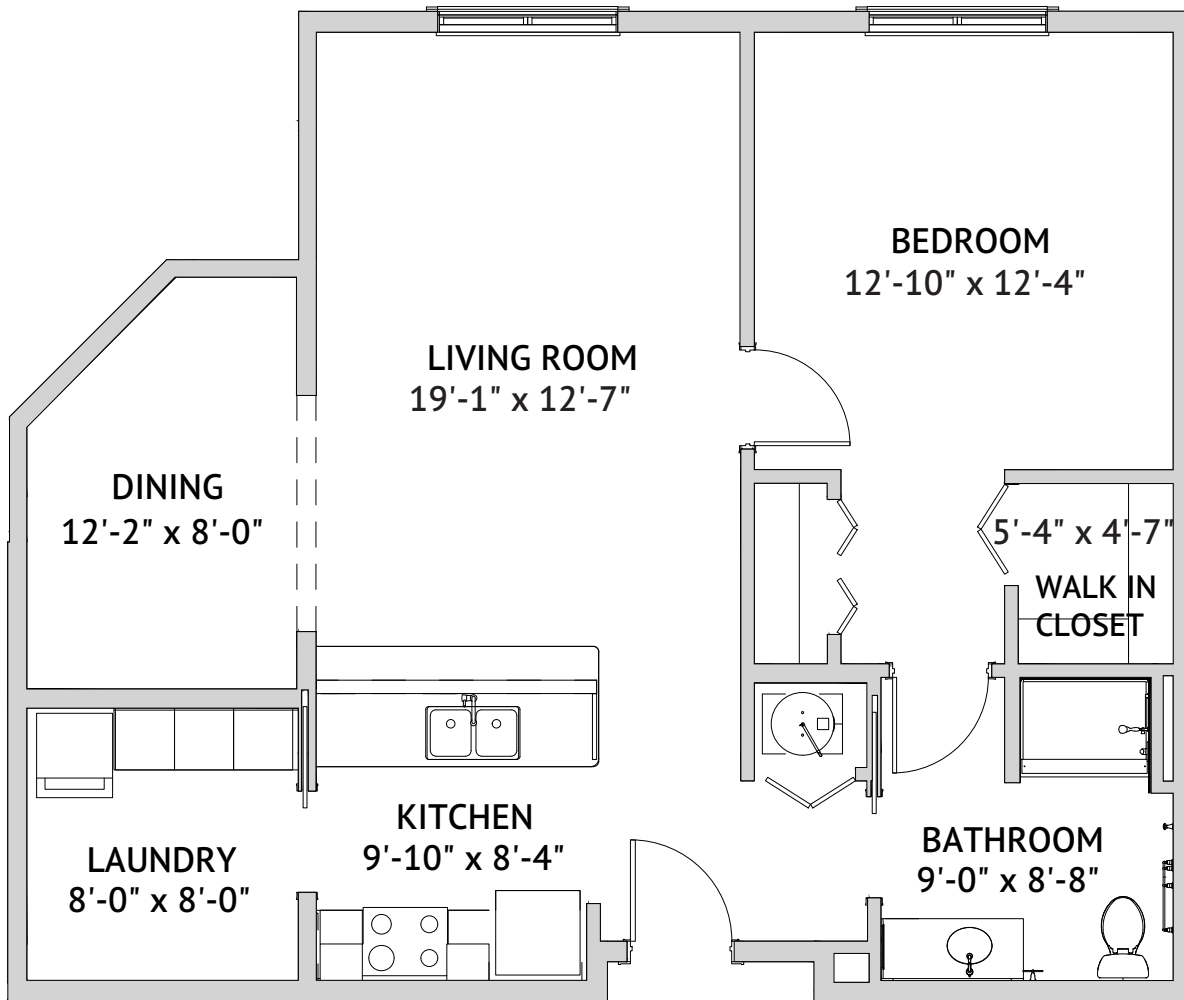
Floor plans are not to scale and are shown for comparative purposes only.  
Actual apartment floor plans may have minor variations.

WATERSOUND is a service mark of The St. Joe Company and is used under license.  
FOUNTAINS is a service mark of Watermark Retirement Communities, LLC and is used under license.

335 Watersound Parkway North • Inlet Beach, FL 32413 • 850-846-3900 • [watersoundfountains.com](http://watersoundfountains.com)



**ROSEMARY – LARGE ONE BEDROOM**  
870 Square Feet

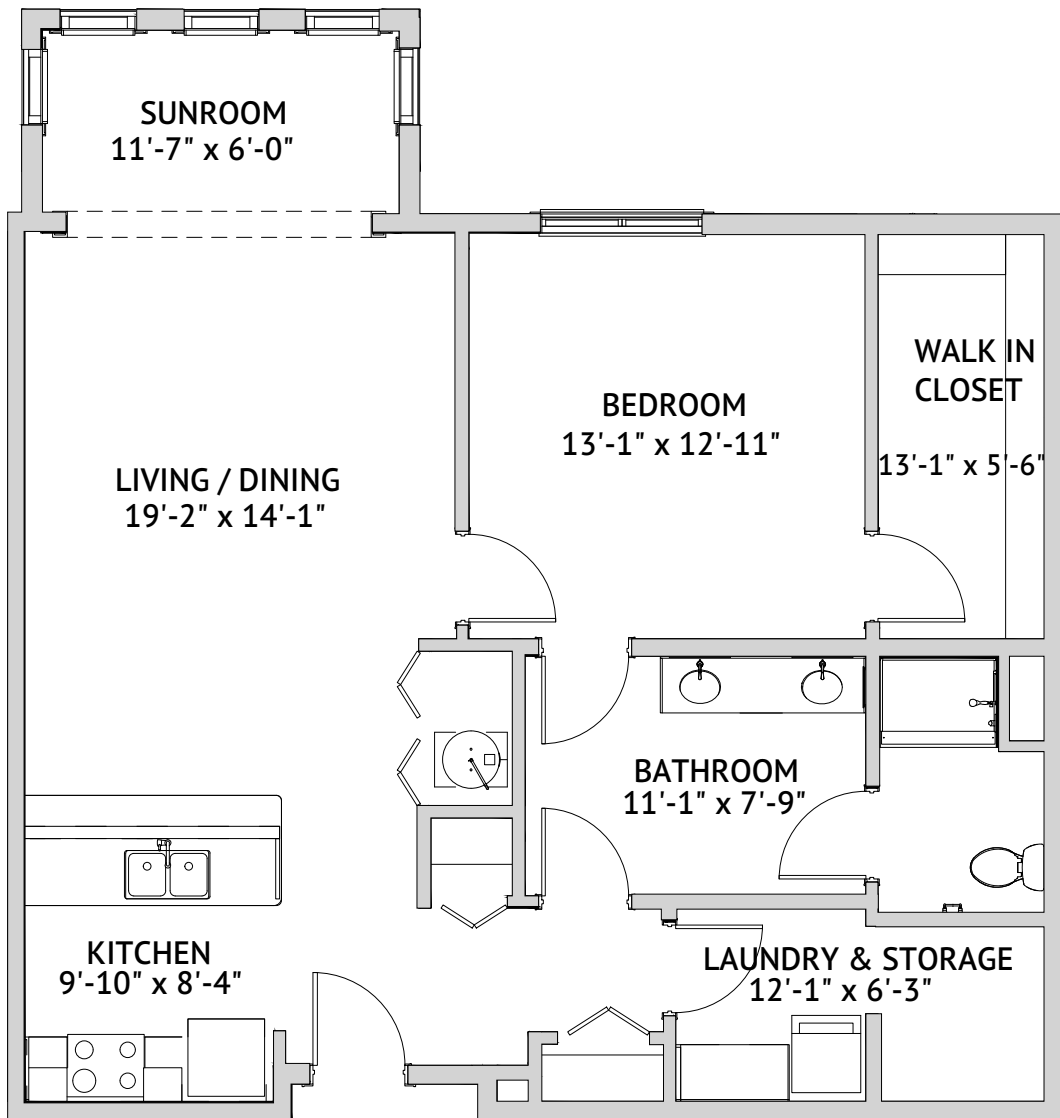


Floor plans are not to scale and are shown for comparative purposes only.  
Actual apartment floor plans may have minor variations.

WATERSOUND is a service mark of The St. Joe Company and is used under license.  
FOUNTAINS is a service mark of Watermark Retirement Communities, LLC and is used under license.

335 Watersound Parkway North • Inlet Beach, FL 32413 • 850-846-3900 • [watersoundfountains.com](http://watersoundfountains.com)

**ROSEMARY – LARGE ONE BEDROOM**  
1,005 Square Feet

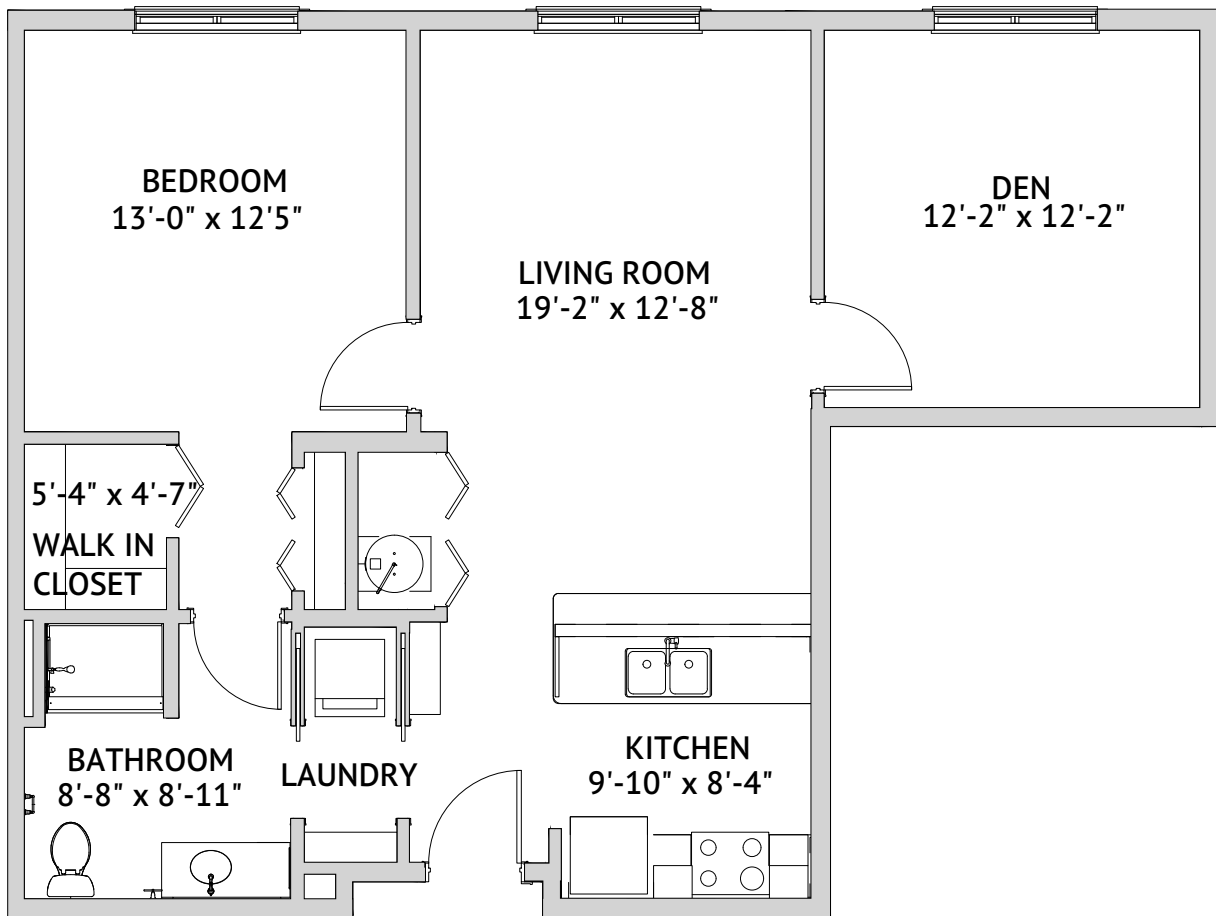


Floor plans are not to scale and are shown for comparative purposes only.  
Actual apartment floor plans may have minor variations.

WATERSOUND is a service mark of The St. Joe Company and is used under license.  
FOUNTAINS is a service mark of Watermark Retirement Communities, LLC and is used under license.

335 Watersound Parkway North • Inlet Beach, FL 32413 • 850-846-3900 • [watersoundfountains.com](http://watersoundfountains.com)

**ROSEMARY – LARGE ONE BEDROOM**  
860 Square Feet

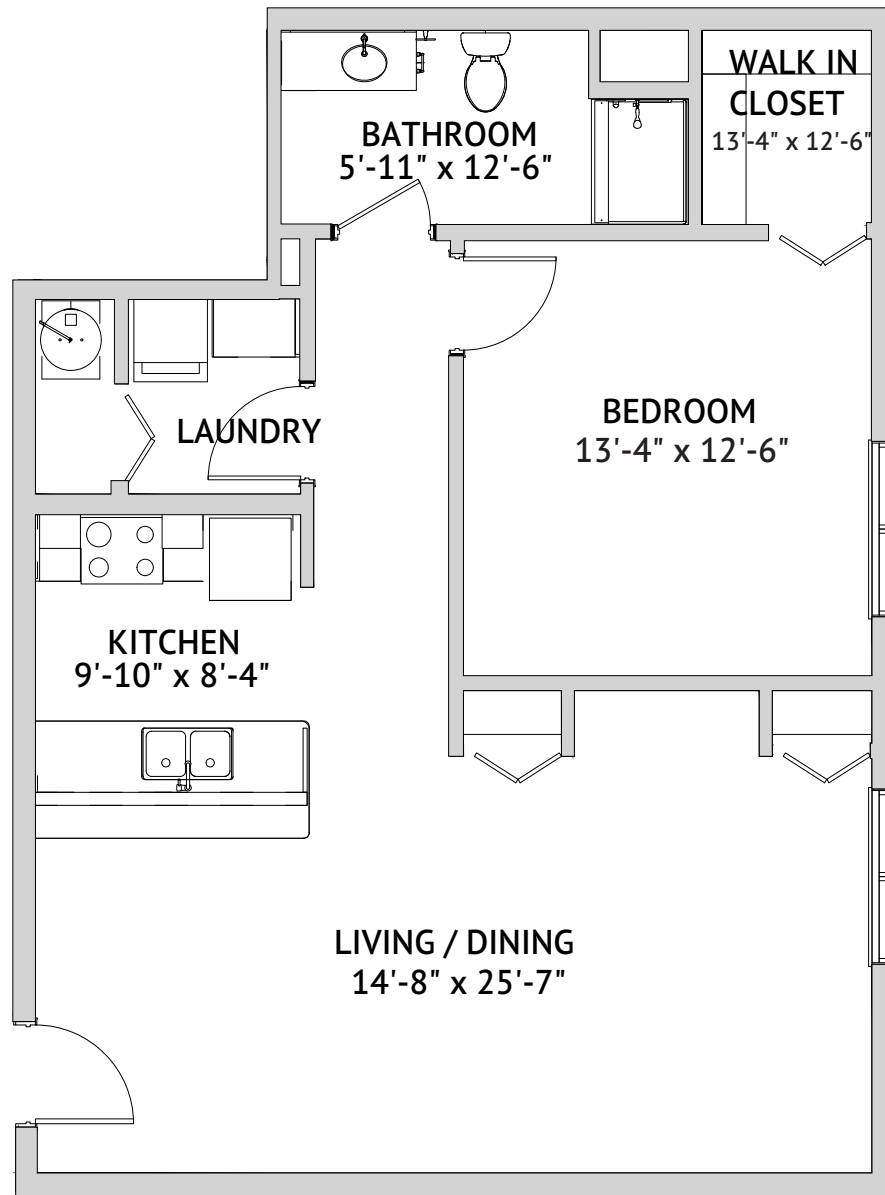


Floor plans are not to scale and are shown for comparative purposes only.  
Actual apartment floor plans may have minor variations.

WATERSOUND is a service mark of The St. Joe Company and is used under license.  
FOUNTAINS is a service mark of Watermark Retirement Communities, LLC and is used under license.

335 Watersound Parkway North • Inlet Beach, FL 32413 • 850-846-3900 • [watersoundfountains.com](http://watersoundfountains.com)

**ROSEMARY – LARGE ONE BEDROOM**  
830 Square Feet

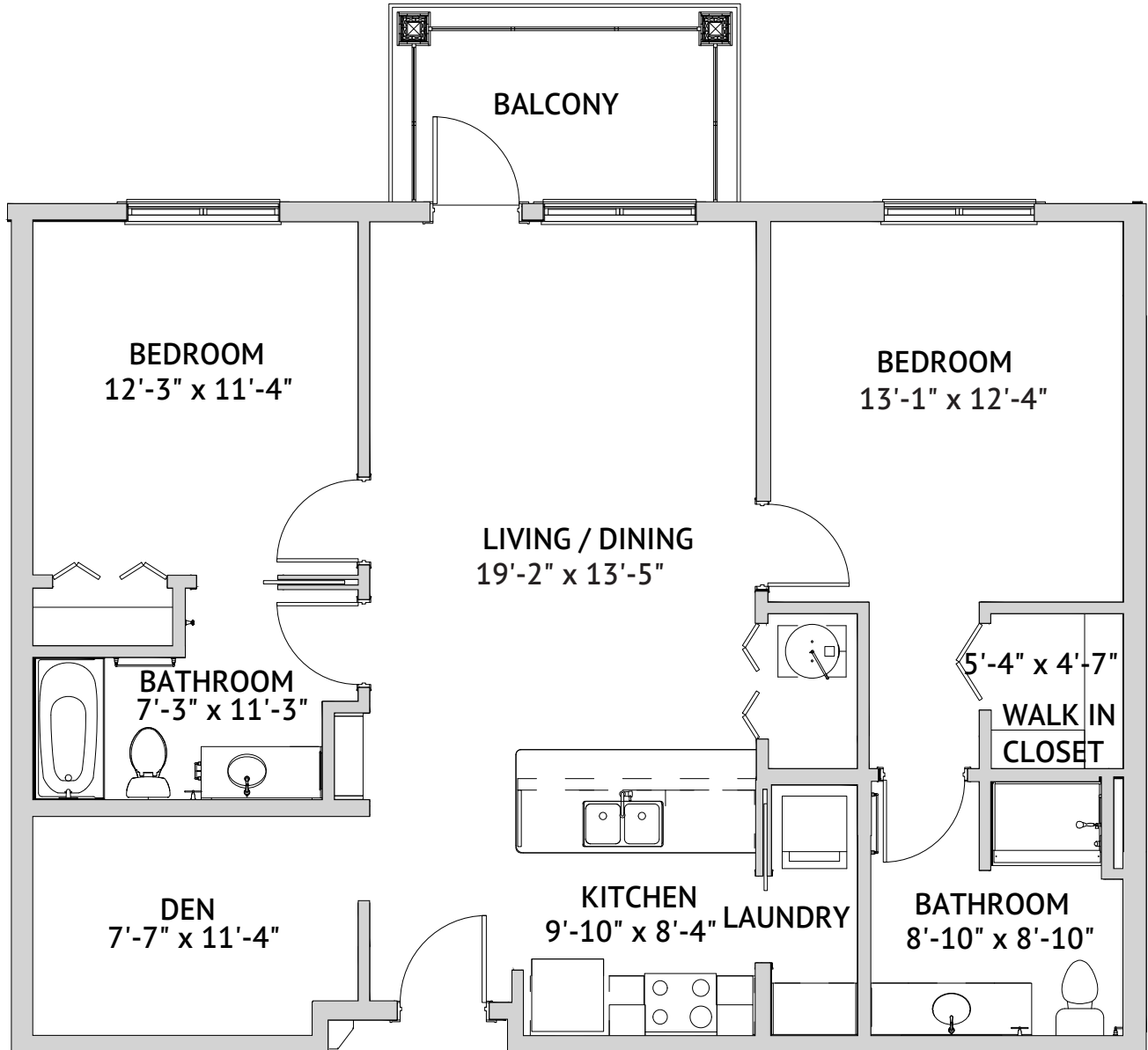


Floor plans are not to scale and are shown for comparative purposes only.  
Actual apartment floor plans may have minor variations.

WATERSOUND is a service mark of The St. Joe Company and is used under license.  
FOUNTAINS is a service mark of Watermark Retirement Communities, LLC and is used under license.

335 Watersound Parkway North • Inlet Beach, FL 32413 • 850-846-3900 • [watersoundfountains.com](http://watersoundfountains.com)

**ALYS – TWO BEDROOM**  
1,060 Square Feet

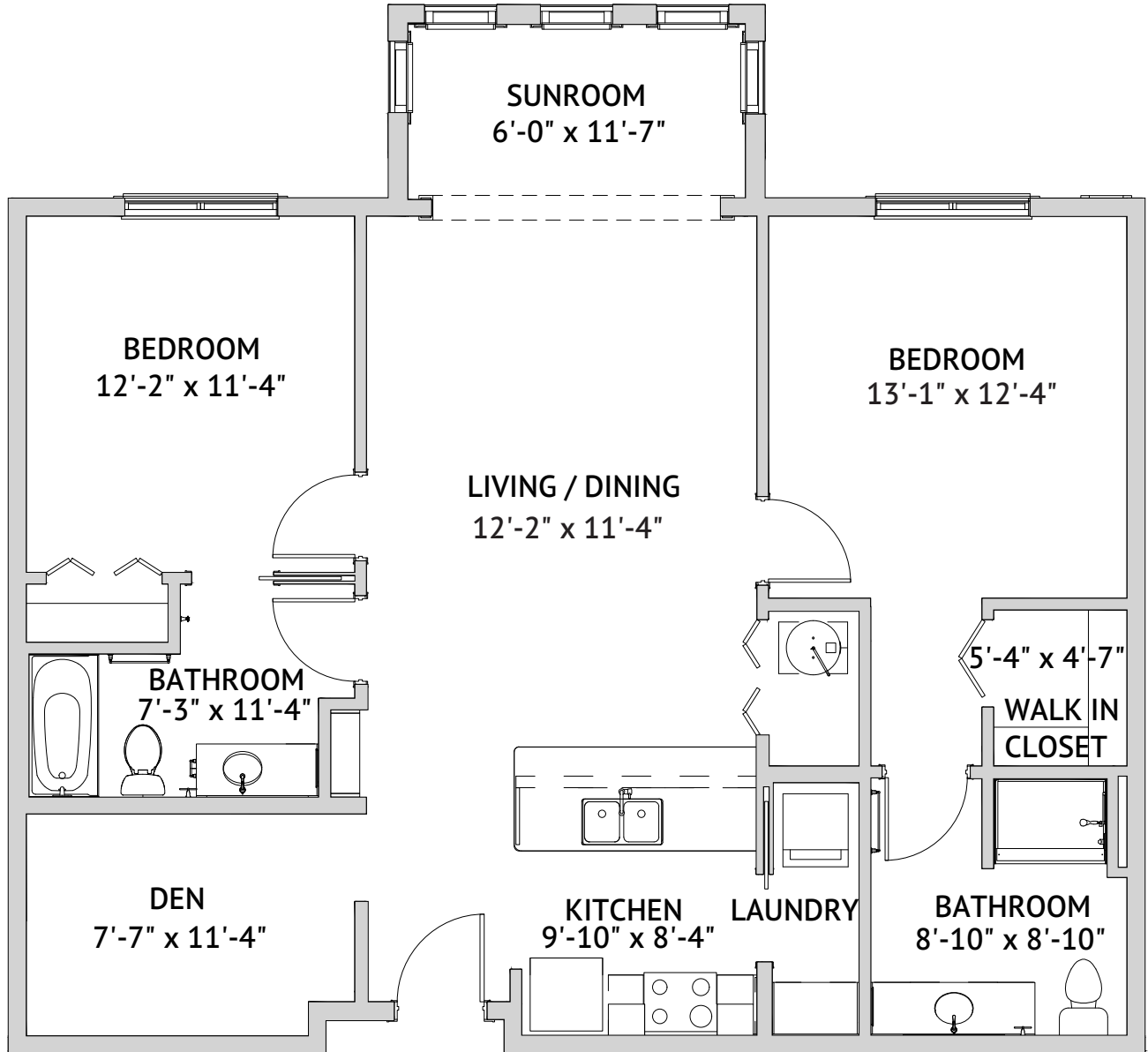


Floor plans are not to scale and are shown for comparative purposes only.  
Actual apartment floor plans may have minor variations.

WATERSOUND is a service mark of The St. Joe Company and is used under license.  
FOUNTAINS is a service mark of Watermark Retirement Communities, LLC and is used under license.

335 Watersound Parkway North • Inlet Beach, FL 32413 • 850-846-3900 • watersoundfountains.com

**ALYS – TWO BEDROOM**  
1,135 Square Feet

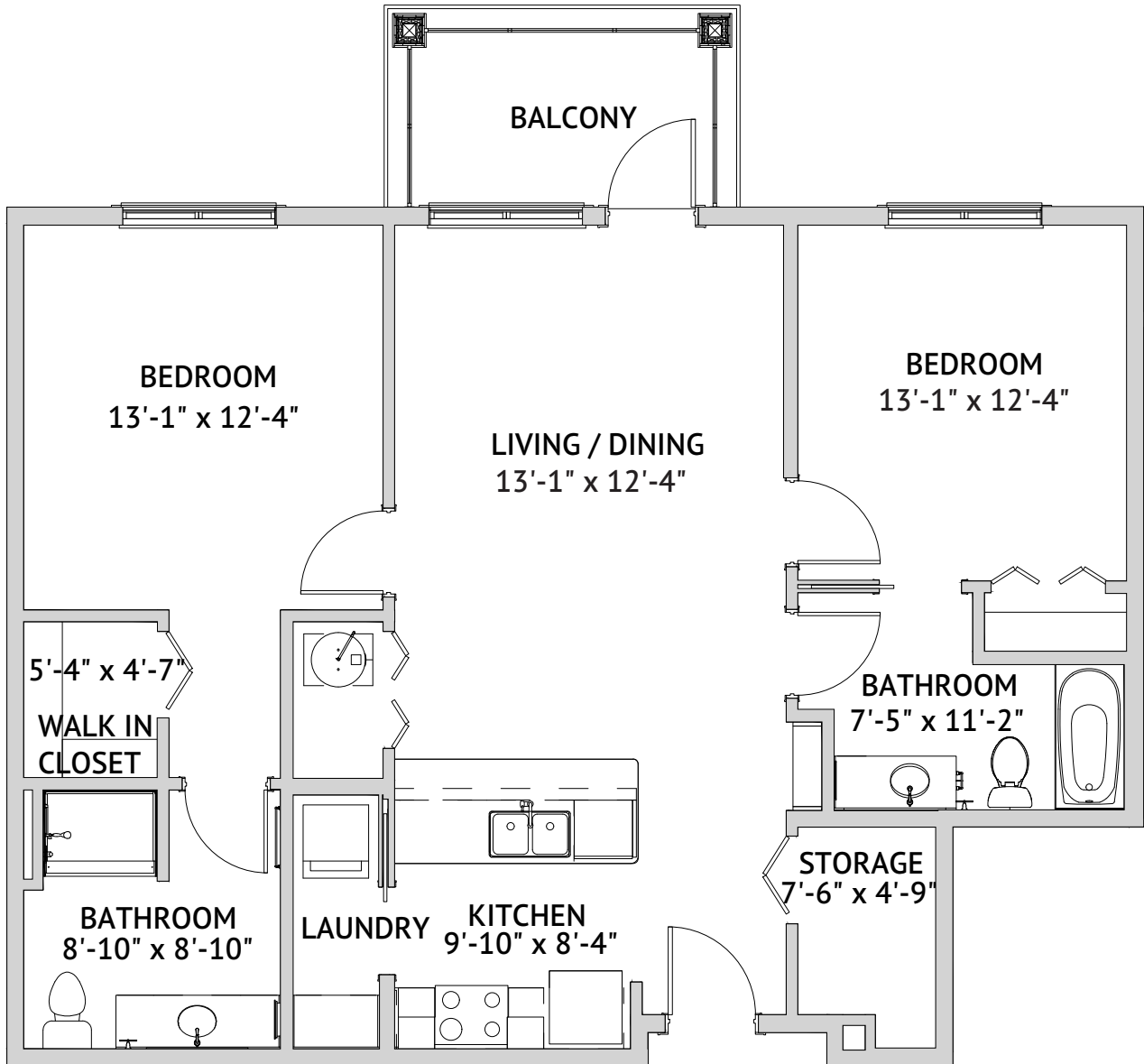


Floor plans are not to scale and are shown for comparative purposes only.  
Actual apartment floor plans may have minor variations.

WATERSOUND is a service mark of The St. Joe Company and is used under license.  
FOUNTAINS is a service mark of Watermark Retirement Communities, LLC and is used under license.

335 Watersound Parkway North • Inlet Beach, FL 32413 • 850-846-3900 • watersoundfountains.com

**ALYS – TWO BEDROOM**  
1,005 Square Feet

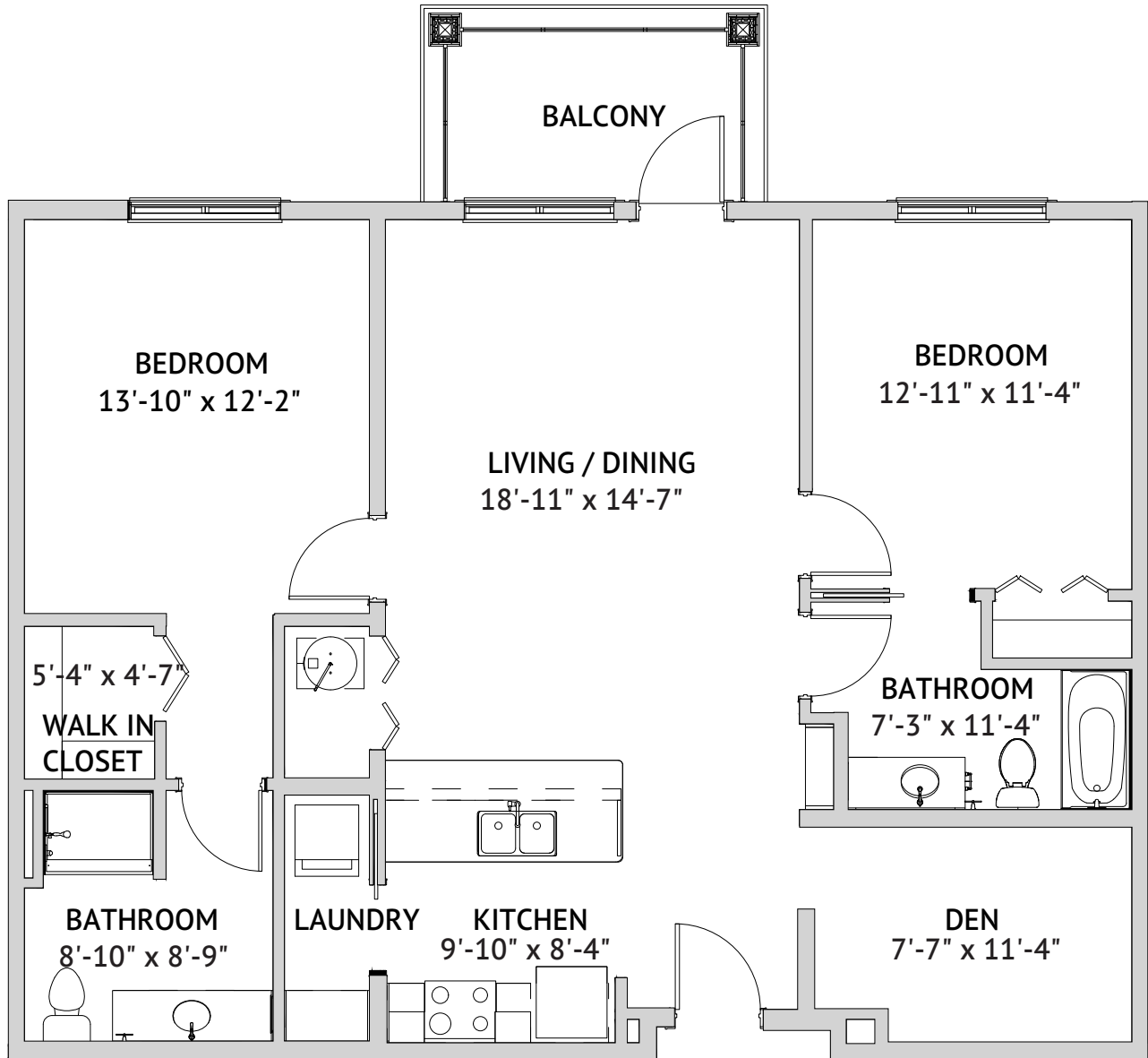


Floor plans are not to scale and are shown for comparative purposes only.  
Actual apartment floor plans may have minor variations.

WATERSOUND is a service mark of The St. Joe Company and is used under license.  
FOUNTAINS is a service mark of Watermark Retirement Communities, LLC and is used under license.

335 Watersound Parkway North • Inlet Beach, FL 32413 • 850-846-3900 • [watersoundfountains.com](http://watersoundfountains.com)

**ALYS – TWO BEDROOM**  
1,115 Square Feet



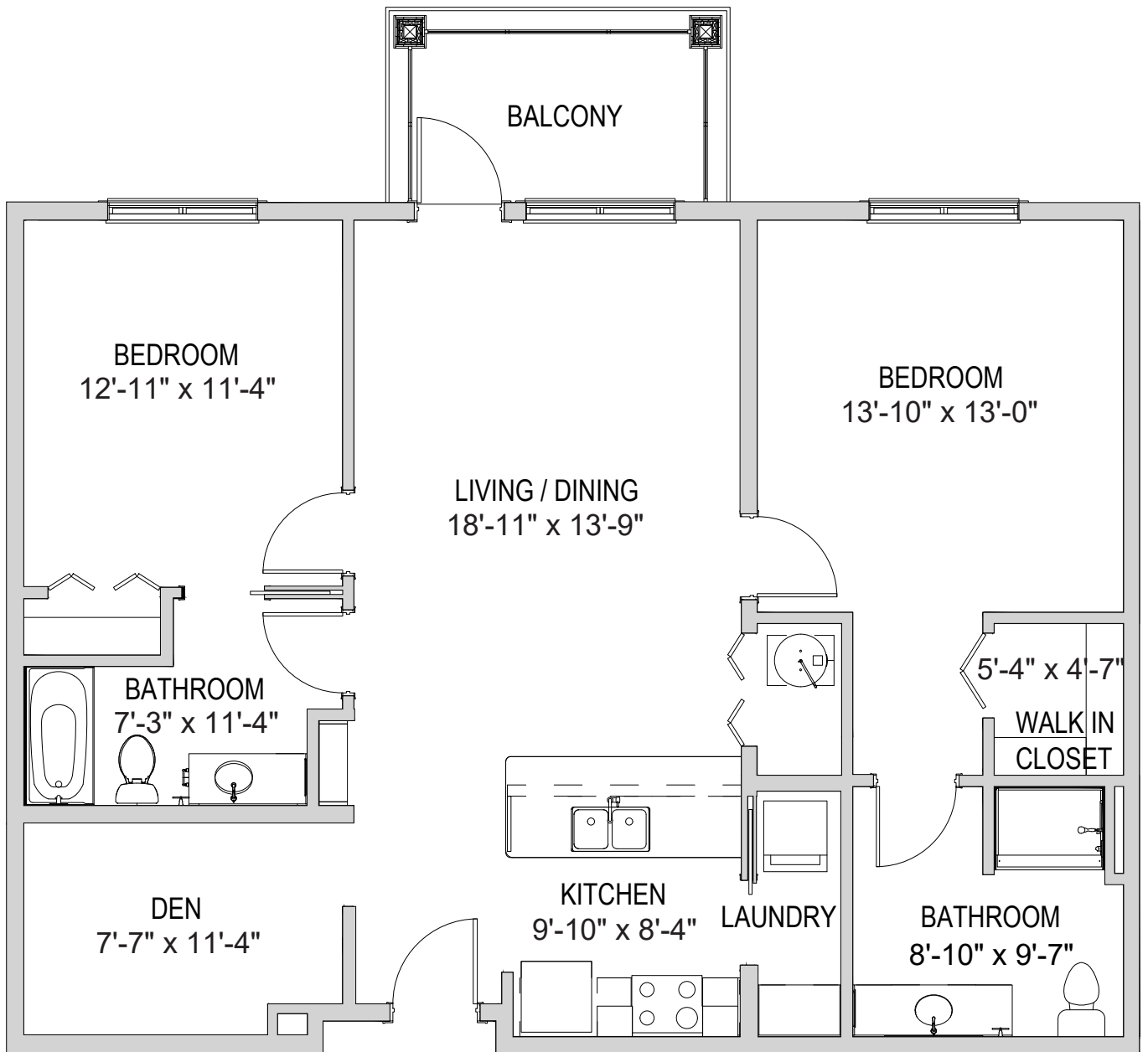
Floor plans are not to scale and are shown for comparative purposes only.  
Actual apartment floor plans may have minor variations.

WATERSOUND is a service mark of The St. Joe Company and is used under license.  
FOUNTAINS is a service mark of Watermark Retirement Communities, LLC and is used under license.

335 Watersound Parkway North • Inlet Beach, FL 32413 • 850-846-3900 • [watersoundfountains.com](http://watersoundfountains.com)



**ALYS – TWO BEDROOM**  
1,115 Square Feet

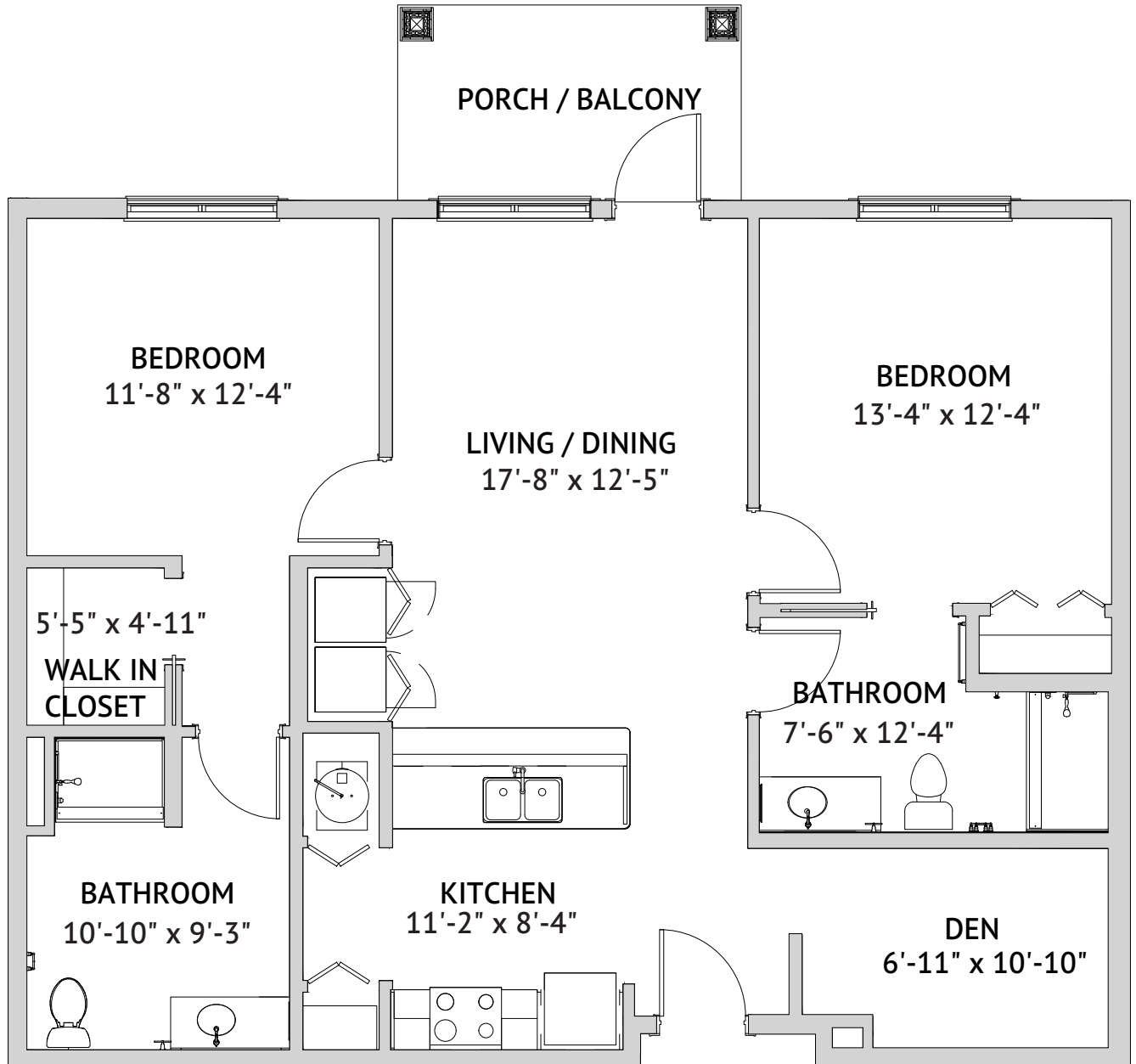


Floor plans are not to scale and are shown for comparative purposes only.  
Actual apartment floor plans may have minor variations.

WATERSOUND is a service mark of The St. Joe Company and is used under license.  
FOUNTAINS is a service mark of Watermark Retirement Communities, LLC and is used under license.

335 Watersound Parkway North • Inlet Beach, FL 32413 • 850-846-3900 • [watersoundfountains.com](http://watersoundfountains.com)

**ALYS – TWO BEDROOM**  
1,060 Square Feet

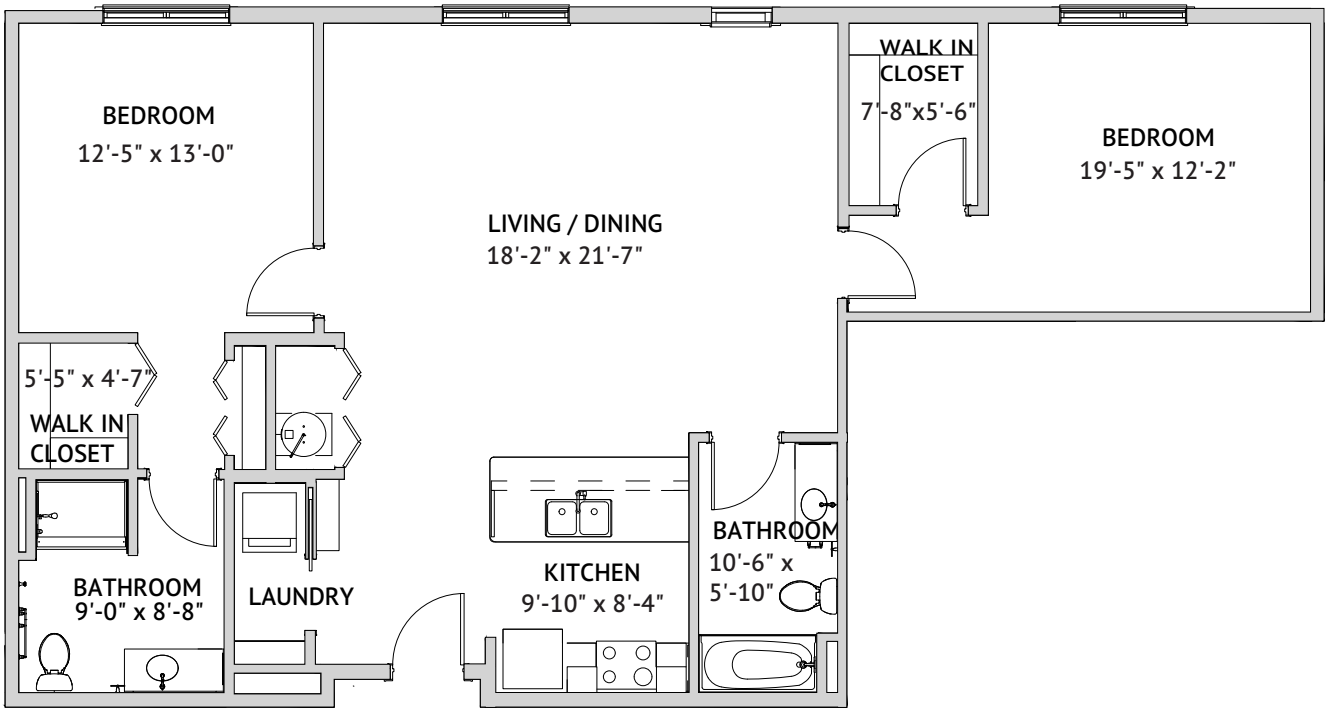


Floor plans are not to scale and are shown for comparative purposes only.  
Actual apartment floor plans may have minor variations.

WATERSOUND is a service mark of The St. Joe Company and is used under license.  
FOUNTAINS is a service mark of Watermark Retirement Communities, LLC and is used under license.

335 Watersound Parkway North • Inlet Beach, FL 32413 • 850-846-3900 • [watersoundfountains.com](http://watersoundfountains.com)

**WATERSOUND – LARGE TWO BEDROOM**  
1,200 Square Feet

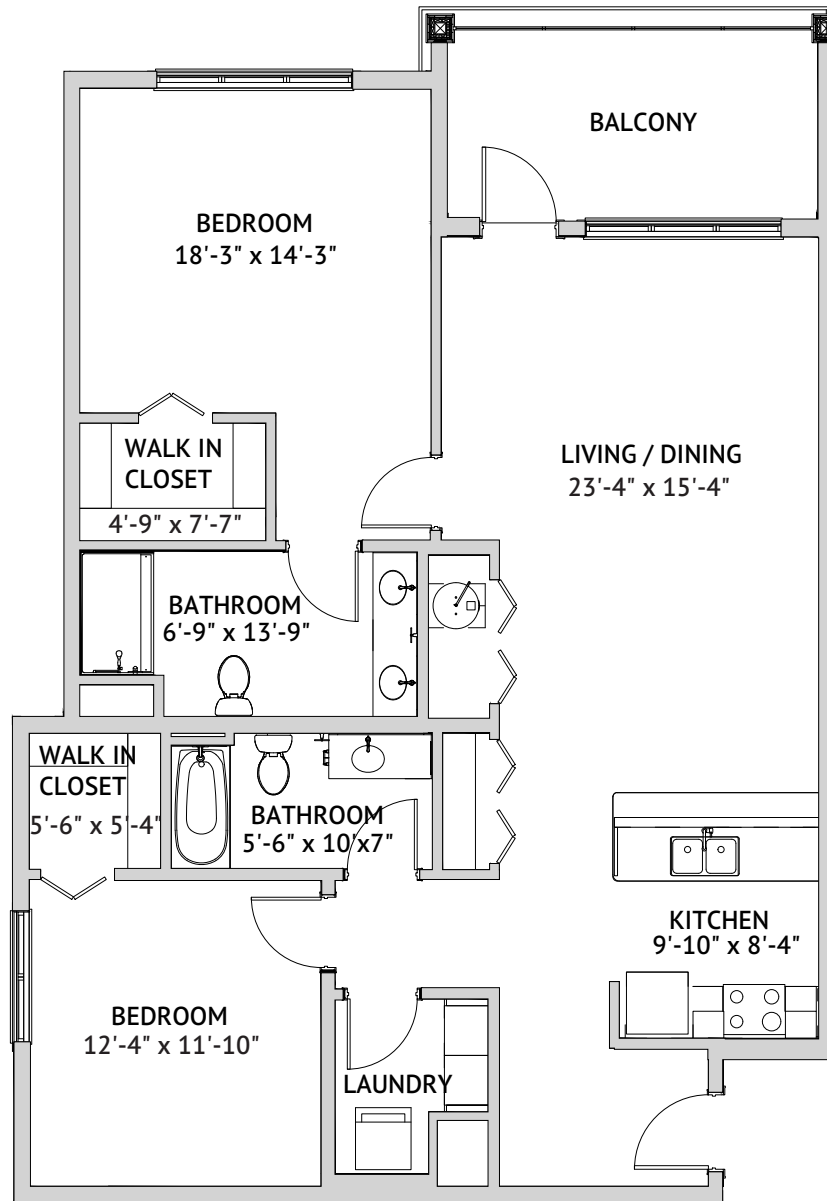


Floor plans are not to scale and are shown for comparative purposes only.  
Actual apartment floor plans may have minor variations.

WATERSOUND is a service mark of The St. Joe Company and is used under license.  
FOUNTAINS is a service mark of Watermark Retirement Communities, LLC and is used under license.

335 Watersound Parkway North • Inlet Beach, FL 32413 • 850-846-3900 • [watersoundfountains.com](http://watersoundfountains.com)

**WATERSOUND – LARGE TWO BEDROOM**  
1,245 Square Feet

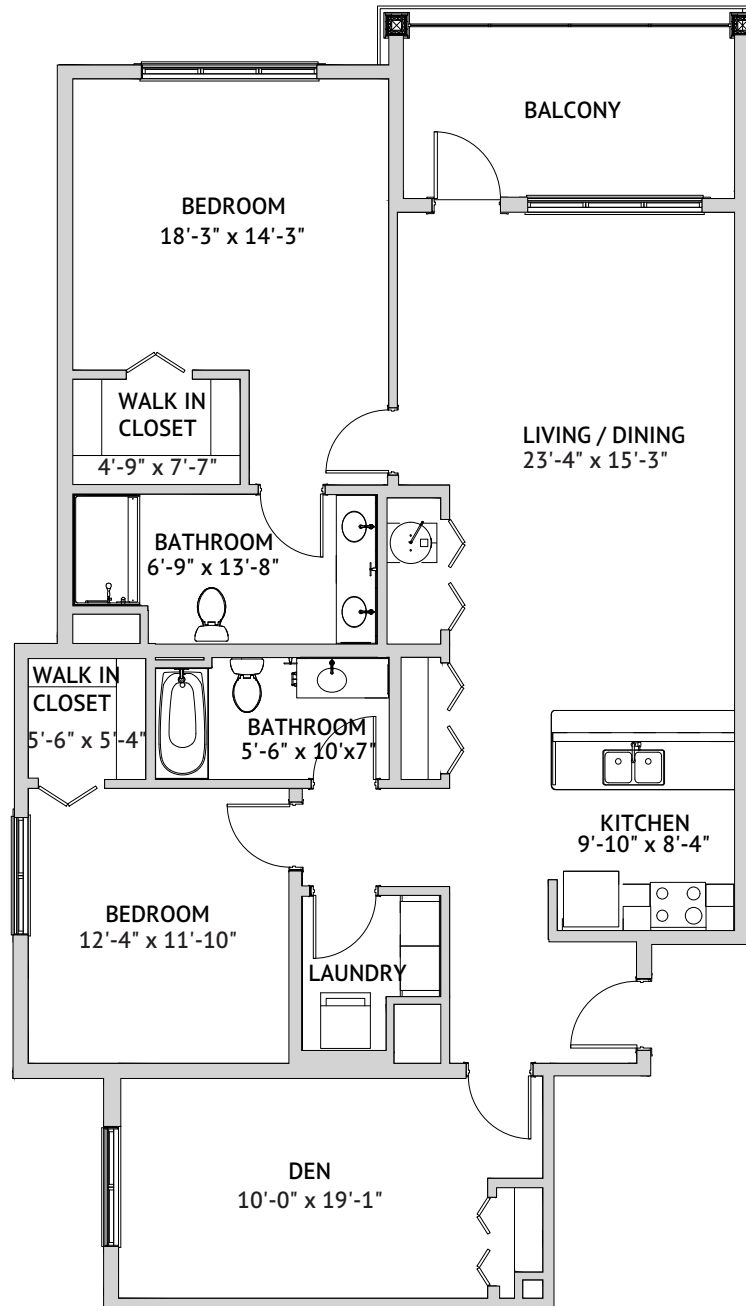


Floor plans are not to scale and are shown for comparative purposes only.  
Actual apartment floor plans may have minor variations.

WATERSOUND is a service mark of The St. Joe Company and is used under license.  
FOUNTAINS is a service mark of Watermark Retirement Communities, LLC and is used under license.

335 Watersound Parkway North • Inlet Beach, FL 32413 • 850-846-3900 • [watersoundfountains.com](http://watersoundfountains.com)

**WATERSOUND – LARGE TWO BEDROOM**  
1,450 Square Feet

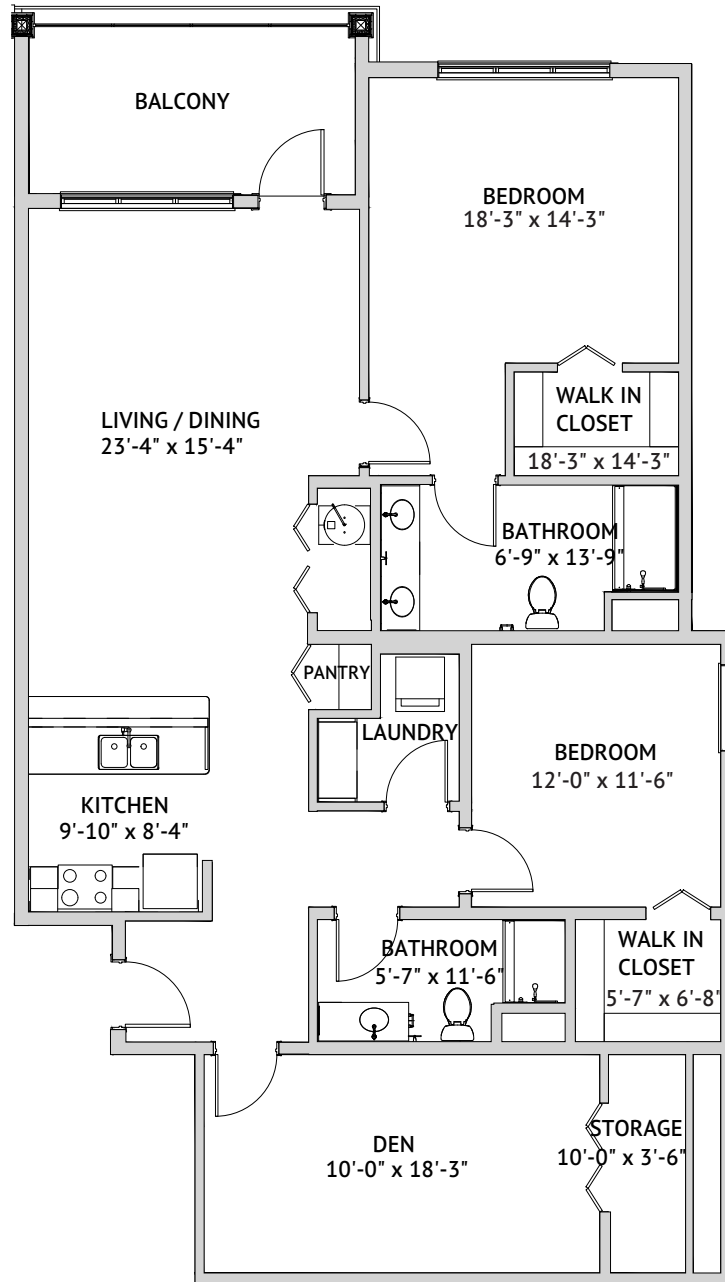


Floor plans are not to scale and are shown for comparative purposes only.  
Actual apartment floor plans may have minor variations.

WATERSOUND is a service mark of The St. Joe Company and is used under license.  
FOUNTAINS is a service mark of Watermark Retirement Communities, LLC and is used under license.

335 Watersound Parkway North • Inlet Beach, FL 32413 • 850-846-3900 • [watersoundfountains.com](http://watersoundfountains.com)

**WATERSOUND – LARGE TWO BEDROOM**  
1,480 Square Feet

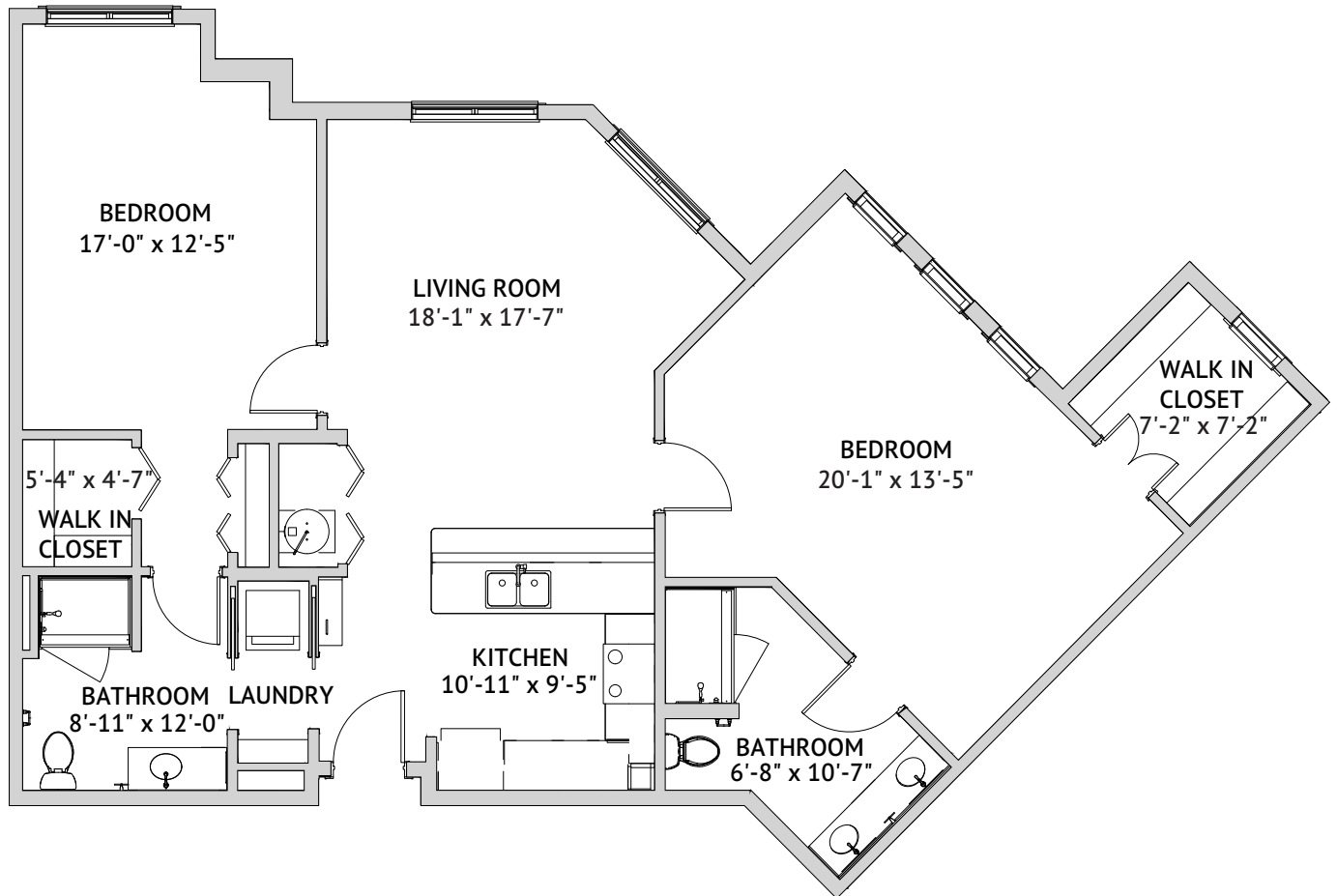


Floor plans are not to scale and are shown for comparative purposes only.  
Actual apartment floor plans may have minor variations.

WATERSOUND is a service mark of The St. Joe Company and is used under license.  
FOUNTAINS is a service mark of Watermark Retirement Communities, LLC and is used under license.

335 Watersound Parkway North • Inlet Beach, FL 32413 • 850-846-3900 • watersoundfountains.com

**WATERSOUND – LARGE TWO BEDROOM**  
1,220 Square Feet

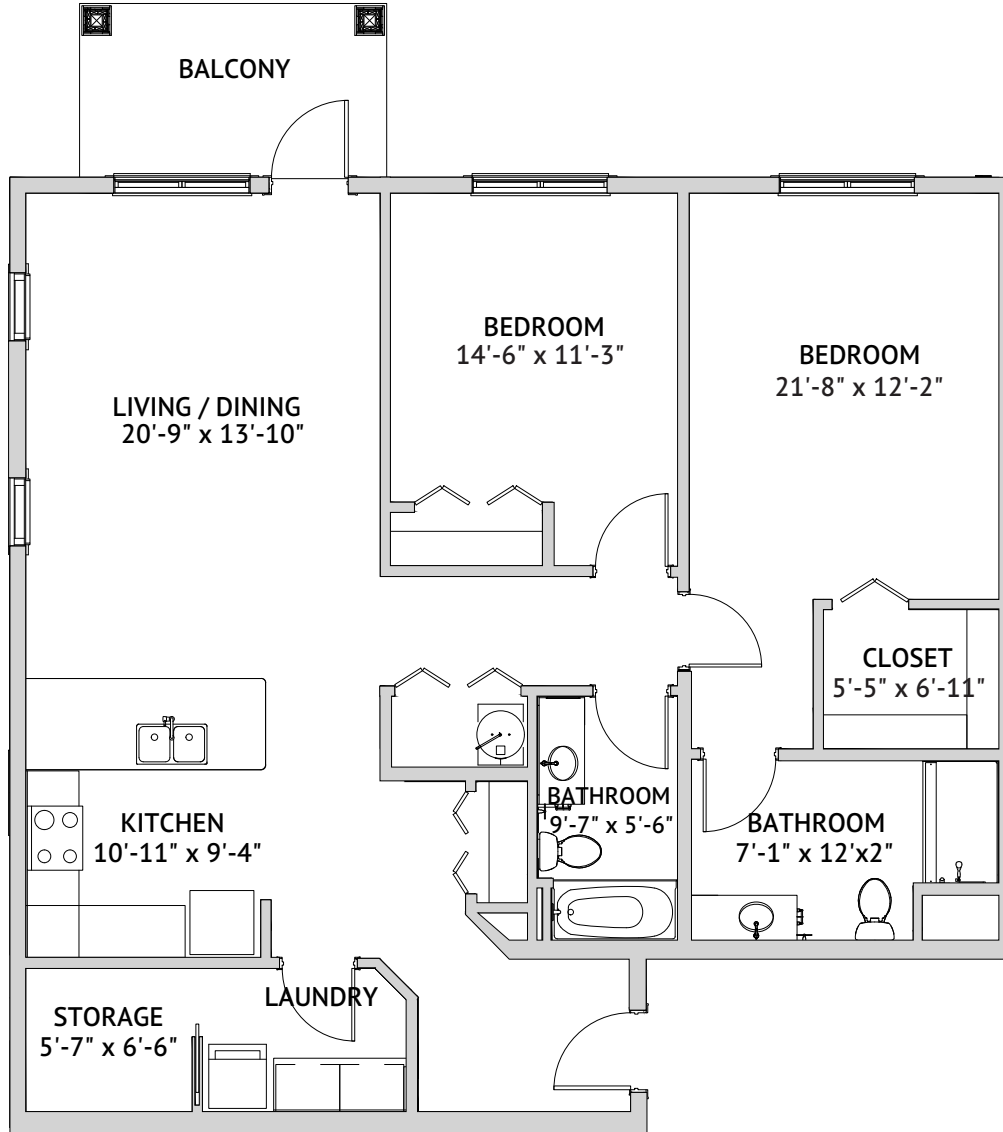


Floor plans are not to scale and are shown for comparative purposes only.  
Actual apartment floor plans may have minor variations.

WATERSOUND is a service mark of The St. Joe Company and is used under license.  
FOUNTAINS is a service mark of Watermark Retirement Communities, LLC and is used under license.

335 Watersound Parkway North • Inlet Beach, FL 32413 • 850-846-3900 • [watersoundfountains.com](http://watersoundfountains.com)

**WATERSOUND – LARGE TWO BEDROOM**  
1,270 Square Feet



Floor plans are not to scale and are shown for comparative purposes only.  
Actual apartment floor plans may have minor variations.

WATERSOUND is a service mark of The St. Joe Company and is used under license.  
FOUNTAINS is a service mark of Watermark Retirement Communities, LLC and is used under license.

335 Watersound Parkway North • Inlet Beach, FL 32413 • 850-846-3900 • [watersoundfountains.com](http://watersoundfountains.com)