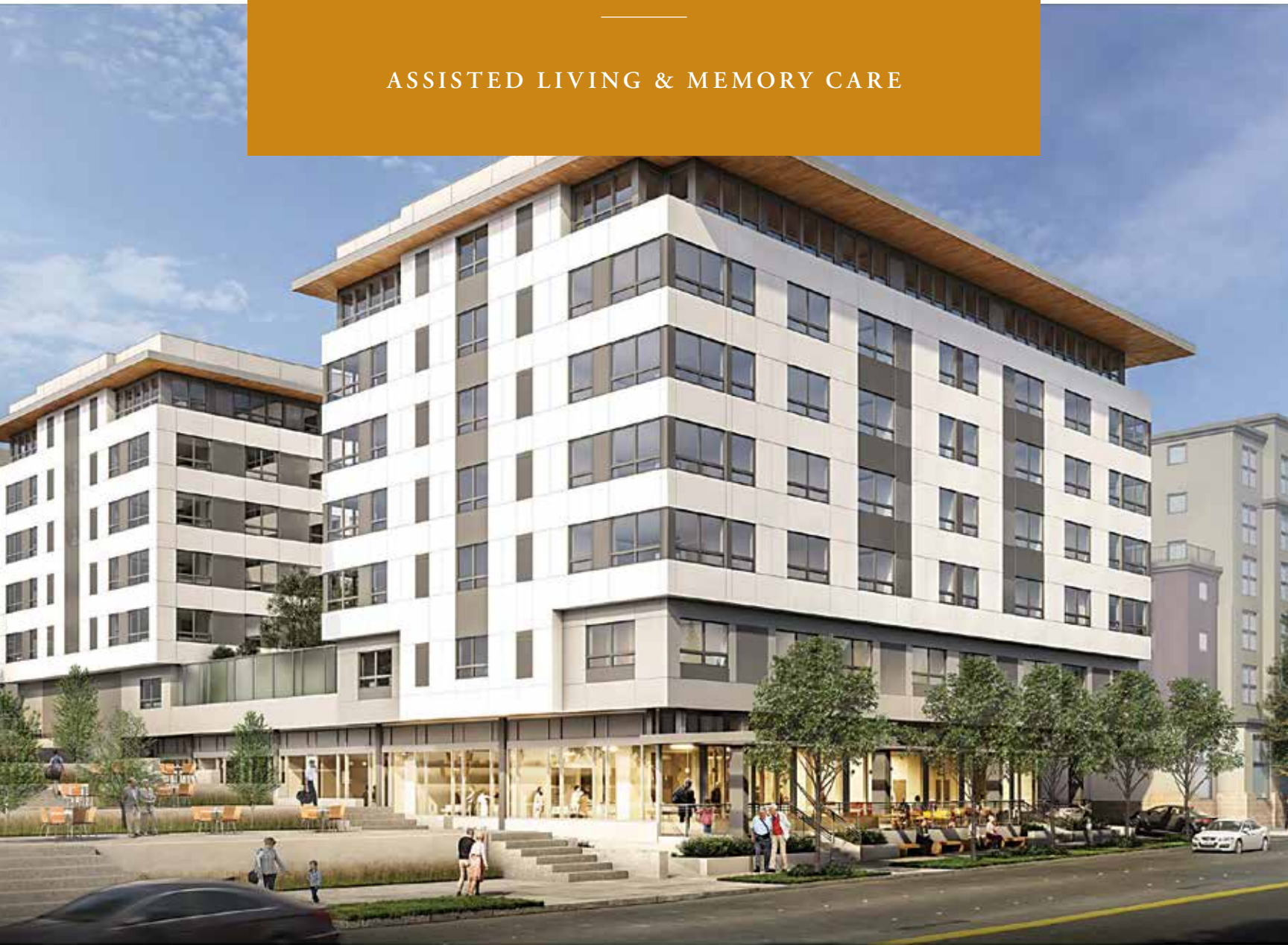




THE WATERMARK
AT BELLEVUE

experience extraordinary
SENIOR LIVING

ASSISTED LIVING & MEMORY CARE





senior living REDEFINED

Resort-style living meets Bellevue.

Imagine living in a place where people know your name – and more. It's where peers understand you, new friends embrace you, and a whole community supports your interests and needs. Award-winning Watermark Retirement Communities® elevates senior living to create an environment of joy, learning, and discovery. At The Watermark at Bellevue, you'll find more than a stylish, luxurious residence to call your own. Living in the heart of downtown Bellevue means you're close to everything you want or need whether it's a grilled salmon dinner at a local bistro, an afternoon of shopping at an upscale boutique, a morning stroll to the farmers market, or a sail on Lake Washington at any time of day. Curated Assisted Living with your lifestyle in mind. As well as an outstanding Memory Care program with dedicated associates and specially trained universal caregivers to help you thrive within our tight-knit community.

Watermark Retirement Communities has been reimagining the concept of senior living for more than 30 years, maintaining its passion and commitment to creating extraordinary and innovative communities where people thrive. The Watermark at Bellevue is a true manifestation of that commitment.

Watermark communities nationwide are known for a curated culture with hospitality-trained, caring associates and a lifestyle built on innovation.

amenities and
AMBIENCE

Sophisticated yet relaxed,
refined yet inviting – our stylish
community offers gorgeous suites
and balanced, personalized care.

At The Watermark at Bellevue, every
detail is designed to enhance your
sense of well-being and purpose.

Our community offers chef-created and
prepared cuisine, beautiful surroundings, and
plush social spaces. Within minutes of your
new home, enjoy lush natural surroundings,
indulge in first-class shopping, and fill yourself
with one-of-a-kind cultural experiences.

Discover activities that spark curiosity
and fill you with the rich satisfaction of
living well at The Watermark at Bellevue,
the heart of extraordinary living.



Flexibility to pursue
your passions.

Living at The Watermark at Bellevue
is carefree living, designed for you
to focus on doing the things you
enjoy most, instead of maintaining a
household. Whether it's housekeeping,
in-residence dining, spa treatments, or
transportation to appointments, leave
it all to us. The Watermark is home
to your next chapter, where you can
thrive in the comfort and safety of a
beautiful and welcoming community.

Special places and shared spaces.

- | | | |
|---------------------------|---|---|
| Dining Room | Renew Wellness Center | Lush outdoor spaces
to relax and socialize |
| Indulge – A Salon and Spa | Private, dedicated outdoor
courtyard and garden for
Memory Care residents | |
| Vitality Fitness Center | | |



CULINARY *experiences to savor*

Tasteful pursuits that nourish the body while filling the heart.

The Watermark’s array of tempting culinary options presents a variety of choices and dining experiences – from fine dining to light bistro fare, our cuisine is as varied as the people who enjoy it. Mirroring the “foodie” spirit of downtown Bellevue, at The Watermark you’ll find exquisite culinary journeys in each of our three signature restaurants.

Dine in a beautiful and welcoming restaurant-style setting, complete with china, sparkling crystal, polished silver and crisp linens. Let our chef delight and amaze your senses with farm-fresh ingredients and herbs grown right here in our community that will nourish your body, mind, and spirit.

Our dining room offers elevated dishes including steaks and chops, while soups, sandwiches, and salads are paired with mixologist-designed cocktails. And when you’re in the mood for something more casual, head to our bistro. Coffee, tea, and conversation all flow freely at this social hub, making it the perfect spot for a hearty lunch, light bite, or evening cocktail.

Room service and private community spaces are available to gather in for special occasions with friends and family, and dedicated restaurants for Assisted Living and Memory Care ensure that everyone delights in our chefs’ delectable creations.

vibrance and VITALITY

The path to wellness takes many forms – some unexpected.



Watermark University features dozens of enriching activities and programs on topics ranging from art workshops to culinary courses, mindful meditation, and more. Residents and associates are encouraged to become instructors themselves.

It begins with our warm and welcoming setting designed for relaxation, revitalization, and everything in between: a fitness center with access to personal training, a wellness center with visiting health specialists and clinicians, and outdoor activities that bring a connection with nature.



Mental and emotional well-being play key roles in the ability of any individual to thrive, and our holistic approach includes a variety of offerings that enrich the mind. From an award-winning **Watermark University** course to a fun excursion through our Extraordinary Outings program, residents have plenty of opportunities for growth.

Self-care is vital, too. The time is always right for pampering on-site at **Indulge – A Salon and Spa**. Our signature menu of massages, treatments, and facials are both relaxing and rejuvenating, while salon manicures, pedicures, haircuts, and color services help everyone feel and look their best.

nuturing care INSPIRED LIVING

The support you need, with the independence you deserve.



Assisted Living at The Watermark at Bellevue offers spacious residences with modern touches, abundant opportunities for connection, and thoughtful care at every step. It's a place for wellness, discovery, and enjoyment – with personalized care from people who know you and understand you.

You'll have full access to our grand suite of amenities, including everything from exciting programs and adventurous outings to fitness classes and rejuvenating spa treatments. Discover new interests and reconnect with previous passions.



Our **Memory Care** neighborhood is an encouraging environment that focuses on infusing joy into your daily moments. Our dedicated associates and specially trained universal caregivers help you thrive within our tight-knit community. Each day, you'll find plenty of opportunities to explore, grow, and enjoy our enrichment experiences. Memory Care allows you to set the tone for each day, so you can choose to follow new or old passions, as well as find time to relax near one of our cozy fireplaces with a book or a good friend.

Life will feel comfortable, familiar, and like home. Expect daily life to include wonderful aromas from delicious meals, music, laughter, family members, fresh flowers, natural light, children, pets, and plenty of fun to look forward to. Your days will be filled with favorite pastimes and creative offerings, as well as plenty of space and time for relaxed moments.

Here, the art of caregiving goes beyond the traditional, so we call our caregivers *Nayas*, a word originating from the ancient language of Sanskrit. A Naya is a guide, a person of wisdom, and a leader who is engaged in the present moment. Specially trained and certified Nayas communicate through validation, rather than correction, to show understanding and support. This thoughtful foundation cultivates a sense of well-being and connection that will help you to feel seen and heard.

RESPIRE

& short-term stays

When you're here, you're family.

Short-term stays with long-term therapeutic gains. They're a great solution for those times when family caregivers are traveling, or when you need a short break with a little extra support while recovering from illness, injury, or surgery. When you stay with us, you're family.



Enjoy tranquility, peace, and contentment in the heart of Bellevue at our pet-friendly community. Feel at ease and comfortable during your temporary stay — whether you're here to heal, are in a transition, or need additional support. You can relax while also taking advantage of all the potential here with new friends, enticing meals, elegant amenities, fun and creative opportunities, and time to enjoy the healing. Indulge in creature comforts, activities such a game of ping pong, events, and amenities, reinvent yourself with a great, new cut or enjoy a manicure and pedicure at our on-site salon, tailored fitness sessions, or mind and body fitness classes.

Whenever you stay with us you won't be burdened with the day-to-day responsibilities that go with maintaining a home. This frees you up to consider a variety of new interests, hobbies, and passion projects. All to be pursued at your own pace, at times of your own choosing.

Services and Amenities

Our full suite of services and amenities make it easy to create a fulfilling lifestyle whether you seek leisure, luxury, or both. And our concierge service makes everything at The Watermark at Bellevue, as well as in the surrounding region, incredibly easy to access.

Assisted Living

Chef-prepared meals served in the full-service dining room

Designer finishes throughout the community

Full-service bistro

Outdoor courtyards with soft seating

Indulge – A Salon and Spa

Activity and craft room

Senior-inspired fitness center with yoga

Resident-shared laundry rooms

24/7 customized care

Concierge services

Scheduled transportation

Valet parking with a secure underground garage

Electric vehicle charging stations

Secured community

Pet-friendly environment

Dynamic community life calendar

Watermark University

Move-in coordination service



Memory Care

24/7 customized care

Escorts for meals and activities

Personal laundry

Diabetic support services

Modern private suites

Sharable suites

Purposefully designed activity and living areas

Elevated and secured outdoor courtyard

Watermark University

Chef-prepared tailored meals

Live the life you want.
We'll manage the details.

Watermark Retirement Communities

Watermark creates extraordinary and innovative communities where people thrive.

We believe aging is about renewal rather than retirement. Watermark communities are known for highly trained and caring associates, a lifestyle built on choice, fine amenities, integrative wellness, and innovative programs including the award-winning Watermark University featuring a wide variety of engaging classes for residents and area seniors.

Watermark has been named in the top 25 Best Workplaces for Aging Services in a national program conducted by the Great Place to Work Institute and published on Fortune.com. A privately held company with a reputation for over 30 years for service, innovation, integrity, and financial stability, Watermark manages more than 70 retirement communities coast to coast. Based in Tucson, Arizona, Watermark is ranked as the nation’s 10th-leading senior housing operator by the American Seniors Housing Association.

Visit watermarkcommunities.com for more information.

Watermark respects, honors, and celebrates diversity in all forms and has embarked upon a partnership with SAGE, the nation’s oldest and largest nonprofit organization that not only brings awareness to the issues surrounding LGBTQ+ aging, but also provides the resources necessary to improve the lives of LGBTQ+ seniors.

As the first nationwide senior living company to conduct SAGE platinum certifications, Watermark is committed to achieving complete SAGE training for at least 80 percent of associates coast to coast. Armed with greater knowledge, empathy, and understanding, Watermark communities will be even more poised to serve our diverse communities, associates, families, friends, and guests.

*Renderings are shown for comparative purposes only.
Actual structures may have minor variations.*





THE WATERMARK AT BELLEVUE

ASSISTED LIVING | MEMORY CARE

121 112th Avenue NE | Bellevue, WA 98004 | 425-504-8001 | watermarkbellevue.com

