

Watermark Retirement Communities calendar



featuring art by our amazingly talented residents

E X P R E S S I O N S
2 0 2 6

Creativity

Keeps Flowing & Growing

A brushstroke. A pencil sketch. A watercolor study. The simplest artistic gesture or the most complex work can have the power to touch our souls. For more than 20 years, we've been honored to showcase the creativity of the men and women who live in Watermark communities. Their talents and aesthetic vision consistently inspire, delight, and surprise us.

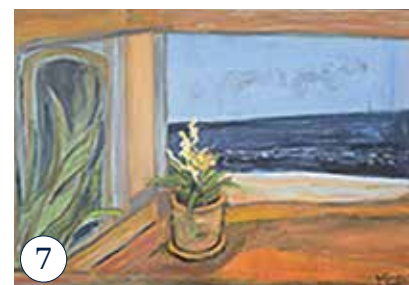
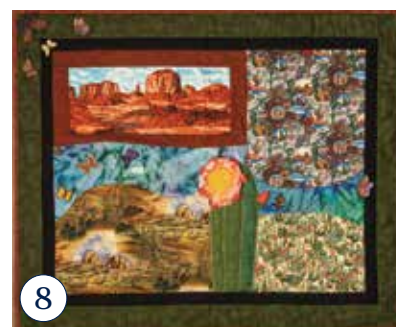
For our 2026 Expressions Calendar, we reviewed a wealth of outstanding submissions. They included astonishing diversity in their subject matter and distinctive styles in paintings, fabric, glass, clay, and unexpected media. Each artist featured here captures something special about a month, a mood, or a season. We hope you find joy on every page and feel inspired to explore your own creative side.

When words are not enough, art speaks for us.



Paul Boethel, CEO

Watermark Retirement Communities, LLC

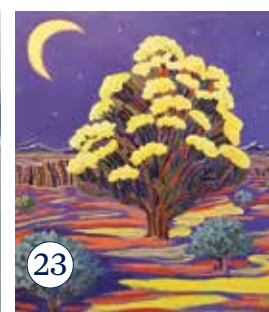


COVER: OCEAN WAVES
Carolee Birtwistle
The Watermark at Cherry Hills

While Carolee lives in New Mexico, she powerfully expresses her deep love for the ocean, conjuring a sense of serenity and awe that anyone can experience in nature. Her paintings come alive with vibrant color, movement, and incredible light. She captures moments that lift our spirits and take us to a place we long to be.

Creative 2026 Inspiration

- 1 CHARLES R. SALAMONE – *Legacy at Clover Blossom*
- 2 ALICE LIOU – *The Watermark at Bellevue*
- 3 SHEILA RYAN – *East Village Place*
- 4 LARRY RADNER – *East Village Place*
- 5 RAY WILSON – *The Watermark at Southpark Meadows*
- 6 BETTYE GRANT – *Sonrisa Senior Living*
- 7 LINA SMONIA – *The Watermark at Almaden*
- 8 ELIZABETH SPROLES – *The Hacienda at the Canyon*
- 9 JAMES SMITH – *The Fountains at Greenbriar*
- 10 RICHARD KEOUGH – *The Watermark at the Pearl*
- 11 MARLENE RUTHERFORD – *Joshua Springs Senior Living*
- 12 ELIZABETH BRUUN-ANDERSON – *Rockland Place*
- 13 JOAN MORRIS – *The Watermark at the Pearl*
- 14 MILLIE SIMPSON – *Rose Tree Place*
- 15 BONNIE SPEAR – *The Watermark at Oro Valley*
- 16 THALIA NEWTON – *Watersound Fountains*
- 17 NANCY CLIFFORD – *East Village Place*
- 18 GORDON GARDINER – *The Fountains at Greenbriar*
- 19 BILL HOLUB – *The Watermark at Cherry Hills*
- 20 ED SCHURIG – *The Fountains at Millbrook*
- 21 ROSEMARY MORT – *The Fountains at Millbrook*
- 22 JON STAVROS – *East Village Place*
- 23 KATHLEEN URQUHART – *The Hacienda at the River*
- 24 CECELIA WEBER – *The Fountains at Greenbriar*





January

2026

ABBEY LEE, LUCY LEE, LADY GEORGE HENRY

Barb Lee, Legacy at Clover Blossom

As a self-taught artist, Barb flourished with natural talent and strong observational skills. She depicts her cats in great detail and gives each one a distinct personality. When Barb worked as a teacher's aide in Rochester, New York, she started painting with a colleague, and she keeps growing every day as an artist, inspired by life's beauty.



Sunday	Monday	Tuesday	Wednesday	Thursday	Friday	Saturday
		DECEMBER 2025 S M T W T H F S 1 2 3 4 5 6 7 8 9 10 11 12 13 14 15 16 17 18 19 20 21 22 23 24 25 26 27 28 29 30 31	FEBRUARY S M T W T H F S 1 2 3 4 5 6 7 8 9 10 11 12 13 14 15 16 17 18 19 20 21 22 23 24 25 26 27 28	1 New Year's Day	2	3 
4	5	6	7	8	9	10 
11	12	13	14	15	16	17
18 	19 Martin Luther King Jr. Day	20	21	22	23	24
25	26 	27	28	29	30	31

Notes




February

2026

FLYING BLUE HERON

Erlinda Gambito, The Hacienda Mission San Luis Rey

In this striking stained glass panel, Erlinda's artistic sophistication and technical skills are on full display. She's captured the feeling of motion and flight while giving her subject individual character and strength. We can imagine the brilliance of this piece as the light flows through it and her heron soars through the air.

Sunday	Monday	Tuesday	Wednesday	Thursday	Friday	Saturday
1 	2 Groundhog Day	3	4	5	6	7
8	9 	10	11	12	13	14 Valentine's Day
15	16 Presidents Day	17  Chinese New Year Mardi Gras	18 Ash Wednesday	19	20	21
22	23	24 	25	26	27	28
JANUARY S M T W T H F S 1 2 3 4 5 6 7 8 9 10 11 12 13 14 15 16 17 18 19 20 21 22 23 24 25 26 27 28 29 30 31	MARCH S M T W T H F S 1 2 3 4 5 6 7 8 9 10 11 12 13 14 15 16 17 18 19 20 21 22 23 24 25 26 27 28 29 30 31					

Notes



March

2026

ENJOYING THE SUN

Terry Lichtenberger, The Fountains at Greenbriar

Terry inherited a passion for photography from his grandfather, who owned a photo studio, and from his mother, who worked there. While Terry's career was mainly in retail, he once owned a photography business in Missouri and also provided photo services on a riverboat. When shooting in nature, he says he and his subject are "in our own little world."

Sunday	Monday	Tuesday	Wednesday	Thursday	Friday	Saturday
1	2	3 	4	5	6	7
8 Daylight Saving Time Begins	9	10	11 	12	13	14
15	16	17 St. Patrick's Day	18	19 	20 First Day of Spring	21
22	23	24	25 	26	27	28
29	30	31	<div>FEBRUARY</div> <div>S M T W T H F S</div> <div>1 2 3 4 5 6 7</div> <div>8 9 10 11 12 13 14</div> <div>15 16 17 18 19 20 21</div> <div>22 23 24 25 26 27 28</div>	<div>APRIL</div> <div>S M T W T H F S</div> <div>1 2 3 4</div> <div>5 6 7 8 9 10 11</div> <div>12 13 14 15 16 17 18</div> <div>19 20 21 22 23 24 25</div> <div>26 27 28 29 30</div>		

Notes



April

2026

AGAVE

Jill Caid, The Fountains at La Cholla

In this striking piece, Jill captures the feel of the American Southwest. She was always interested in art and started doing watercolors in 2008. Jill is largely self-taught and attended a few workshops to cultivate her skills. Her passion and hard work paid off in "Agave," a vivid painting with a 3D effect. Her advice to others with creative aspirations: *Enjoy the ride!*

Sunday	Monday	Tuesday	Wednesday	Thursday	Friday	Saturday
		MARCH S M T W T H F S 1 2 3 4 5 6 7 8 9 10 11 12 13 14 15 16 17 18 19 20 21 22 23 24 25 26 27 28 29 30 31	1 April Fools' Day Passover Begins	2 ○	3 Good Friday	4
5 Easter Sunday	6	7	8	9 Passover Ends	10 ●	11
12	13	14	15 Tax Day	16	17 ●	18
19	20	21	22 Earth Day	23	24 ●	25
26	27	28	29	30	MAY S M T W T H F S 1 2 3 4 5 6 7 8 9 10 11 12 13 14 15 16 17 18 19 20 21 22 23 24 25 26 27 28 29 30 31	

Notes



May
2026

GERANIUMS

Shirley Fernekes, The Fountains at Millbrook

The beauty of nature inspires Shirley to create artwork like the lovely oil painting featured here. Her interest in art began by age 12, with her father as her first teacher. Then she was self-taught for years before going to art school. Shirley enjoyed a career in art and also became a dog groomer. She recommends painting as a great way to relieve stress.

Sunday	Monday	Tuesday	Wednesday	Thursday	Friday	Saturday
			APRIL S M T W T H F S 1 2 3 4 5 6 7 8 9 10 11 12 13 14 15 16 17 18 19 20 21 22 23 24 25 26 27 28 29 30	JUNE S M T W T H F S 1 2 3 4 5 6 7 8 9 10 11 12 13 14 15 16 17 18 19 20 21 22 23 24 25 26 27 28 29 30	1	2
3	4	5 Cinco de Mayo	6	7	8	9
10 Mother's Day	11	12	13	14	15	16
17	18	19	20	21	22	23
24 31	25 Memorial Day	26	27	28	29	30

Notes



June

2026

JEWELRY

Mary Ann Rolfe, The Hacienda at the Canyon

To make her jewelry, Mary Ann uses a sophisticated computer painting program, jewelry-grade resin, and boundless creativity. The resulting pieces dance in the light. Her apartment is filled with her photography, hand-printed tiles, paintings, sculpture, and more. She says when she works in pastel, she sees the world “in the language of pastel.”

Sunday	Monday	Tuesday	Wednesday	Thursday	Friday	Saturday
	1 First Day of Pride Month	2	3	4	5	6
7	8 ☾	9	10	11	12	13
14 Flag Day	15 ●	16	17	18	19 Juneteenth	20
21 Father's Day First Day of Summer ☾	22	23	24	25	26	27
28	29 ○	30	<div>MAY</div> <div> <div>S M T W T H F S</div> <div> <div>1 2</div> <div>3 4 5 6 7 8 9</div> <div>10 11 12 13 14 15 16</div> <div>17 18 19 20 21 22 23</div> <div>24 25 26 27 28 29 30</div> <div>31</div> </div> </div>	<div>JULY</div> <div> <div>S M T W T H F S</div> <div> <div>1 2 3 4</div> <div>5 6 7 8 9 10 11</div> <div>12 13 14 15 16 17 18</div> <div>19 20 21 22 23 24 25</div> <div>26 27 28 29 30 31</div> </div> </div>		

Notes



July
2026

BATHING BEAUTIES

Myrna Gale, The Hacienda Mission San Luis Rey

Myrna brings imagination, skill, and personal passion to her needlepoint creations. Her vibrant colors and embellishments bring beauty and personality to each piece. She's made more than 100 pieces. Many are wall hangings, and at least 30 are tallit, shawls associated with Jewish prayers. "Everyone in my family has received one," Myrna says.

Sunday	Monday	Tuesday	Wednesday	Thursday	Friday	Saturday
	<div>JUNE</div> <div>S M T W T H F S</div> <div>1 2 3 4 5 6</div> <div>7 8 9 10 11 12 13</div> <div>14 15 16 17 18 19 20</div> <div>21 22 23 24 25 26 27</div> <div>28 29 30</div>	<div>AUGUST</div> <div>S M T W T H F S</div> <div>1</div> <div>2 3 4 5 6 7 8</div> <div>9 10 11 12 13 14 15</div> <div>16 17 18 19 20 21 22</div> <div>23 24 25 26 27 28 29</div> <div>30 31</div>	1	2	3	4
5	6	7 <div>☾</div>	8	9	10	11 <div>Independence Day</div>
12	13	14 <div>●</div>	15	16	17	18
19	20	21 <div>☾</div>	22	23	24	25
26	27	28	29 <div>○</div>	30	31	

Notes



August

2026

SERENE DISILLUSIONMENT

Madeleine Linville, The Watermark at the Pearl

After growing up around the world as a self-proclaimed Air Force brat, Madeline settled in the Pacific Northwest. Her creativity flourished at age 50 in the San Juan Islands. She says photography started as a hobby and became her passion. "Everyone has an artistic spark inside them," Madeleine says. "Part of the journey is finding out what lights that spark."



Sunday	Monday	Tuesday	Wednesday	Thursday	Friday	Saturday
				JULY S M T W T H F S 1 2 3 4 5 6 7 8 9 10 11 12 13 14 15 16 17 18 19 20 21 22 23 24 25 26 27 28 29 30 31	SEPTEMBER S M T W T H F S 1 2 3 4 5 6 7 8 9 10 11 12 13 14 15 16 17 18 19 20 21 22 23 24 25 26 27 28 29 30	1
2	3	4	5	6	7	8
9	10	11	12	13	14	15
16	17	18	19	20	21	22
23	24	25	26	27	28	29
30	31					

Notes



September

2026

AFTER A HARD DAY'S WORK

Loretta Grigioni, The Fountains at Millbrook

The boy in this enchanting scene reminds Loretta of her own grandson. She's a self-taught artist from the East Bronx, New York, and finds art is a natural way for her to express her feelings. It's also a good reason to get outdoors. Loretta says she's at ease while painting and feels happy and fulfilled when she finishes a piece.

Sunday	Monday	Tuesday	Wednesday	Thursday	Friday	Saturday
	<div>AUGUST</div> <div>S M T W T H F S</div> <div>1</div> <div>2 3 4 5 6 7 8</div> <div>9 10 11 12 13 14 15</div> <div>16 17 18 19 20 21 22</div> <div>23 24 25 26 27 28 29</div> <div>30 31</div>	1	2	3	4 <div></div>	5
6	7 <div>Labor Day</div>	8	9	10	11 <div></div> <div>Rosh Hashanah Begins</div>	12
13 <div>Grandparents Day</div> <div>Rosh Hashanah Ends</div>	14	15	16	17	18 <div></div>	19
20 <div>Yom Kippur Begins</div>	21 <div>Yom Kippur Ends</div>	22 <div>First Day of Autumn</div>	23	24	25	26 <div></div>
27	28	29	30	<div>OCTOBER</div> <div>S M T W T H F S</div> <div>1 2 3</div> <div>4 5 6 7 8 9 10</div> <div>11 12 13 14 15 16 17</div> <div>18 19 20 21 22 23 24</div> <div>25 26 27 28 29 30 31</div>		

Notes



October

2026

WATER'S EDGE

Judy Causey, The Hacienda Mission San Luis Rey

When Judy was in her 20s, she started taking pictures with her point-and-shoot camera. Her skill and aesthetic sensitivity are on full display today with this photograph, shot in Yosemite National Park. Nature, people, and light and shadows inspire her work. She says she has a feeling of wonder while making photographs, and joy in seeing the results.



Sunday	Monday	Tuesday	Wednesday	Thursday	Friday	Saturday
		SEPTEMBER S M T W T H F S 1 2 3 4 5 6 7 8 9 10 11 12 13 14 15 16 17 18 19 20 21 22 23 24 25 26 27 28 29 30	NOVEMBER S M T W T H F S 1 2 3 4 5 6 7 8 9 10 11 12 13 14 15 16 17 18 19 20 21 22 23 24 25 26 27 28 29 30	1	2	3 
4	5	6	7	8	9	10 
11	12 Indigenous Peoples Day	13	14	15	16	17
18 	19	20	21	22	23	24
25	26 	27	28	29	30	31 Halloween

Notes



November

2026

TWO GOURD POTS AND COYOTE SCULPTURE

Joseph Lawrence, Joshua Springs Senior Living

Having lived in Wyoming, California, and Arizona, Joseph reveals a Western aesthetic and an affinity for Native American art. He used gourds, clay, and acrylic paint to create the distinctive work featured here. Joseph is a Navy veteran with a degree in fine arts who worked in the furniture business and interior design world, and continues creating beautiful art.



Sunday	Monday	Tuesday	Wednesday	Thursday	Friday	Saturday
1 Daylight Saving Time Ends	2	3 Election Day	4	5	6	7
8 Diwali	9	10	11 Veterans Day	12	13	14
15	16	17	18	19	20	21
22	23	24	25	26 Thanksgiving Day	27	28
29	30	<div>OCTOBER</div> <div>S M T W T H F S</div> <div>1 2 3</div> <div>4 5 6 7 8 9 10</div> <div>11 12 13 14 15 16 17</div> <div>18 19 20 21 22 23 24</div> <div>25 26 27 28 29 30 31</div>	<div>DECEMBER</div> <div>S M T W T H F S</div> <div>1 2 3 4 5</div> <div>6 7 8 9 10 11 12</div> <div>13 14 15 16 17 18 19</div> <div>20 21 22 23 24 25 26</div> <div>27 28 29 30 31</div>			

Notes



December

2026

RED SCARF WITH RAINBOW RUFFLES

Joan Oxendine, The Sky Bridge at Town Center

A helpful neighbor taught Joan how to crochet many years ago, telling her that “if you can read a pattern, you can make anything.” Inspired by that, she’s made all kinds of clothes, scarves, and doll outfits. The piece seen here features the first ruffles she’s made. With a few basic stitches, Joan says, the possibilities are endless.



Creative 2026 Inspiration



DOLORES LEVY
The Fountains at Millbrook



CHOTARD DOLL
The Fountains at La Cholla



DEWEY PEERSON
The Fountains at Greenbriar



FRANKLIN FONG
The Hacienda Mission San Luis Rey



JUDY VERZELLO
Sonrisa Senior Living



SANFORD JONES
The Hacienda at the Canyon



BARBARA MARINELLI
The Fountains at Millbrook



ROBERT KING
East Village Place



MARLENE RUTHERFORD
Joshua Springs Senior Living



SHEILA RYAN
East Village Place



ED WILGUS
The Watermark at the Pearl



LINDA SCHUTTLE
The Hacienda at the Canyon

GRAVITY AND THE BARD

*If words were
Musical notes
They could reach high
And dwell among the Titans.*

*But words, freighted
With intent, with purpose
Even with deceit
Fall to the earth
Like Daedalus*

*The bard said it right
Words need thought
If they would escape
The earthly coil
And rise to heaven's eye.*

JIM POWELL

The Watermark at the Pearl



BARBARA MINTON

The Fountains at Millbrook



SHARON WACENSKE

Sonrisa Senior Living

ODE TO A LOOM

*What will it look like?
Weaving and threading dark
colors and bright moments,
some smooth,
others knotted,
some etched in our hearts,
others just fade away.
Will I ever know when
it will end,
this tapestry of an
extraordinary journey.*

MURIEL FEUER

The Watermark at the Pearl



ANITA KYAMKO-YAP

The Hacienda Mission San Luis Rey



MARLENE RUTHERFORD

Joshua Springs Senior Living



BARBARA BUSSEY

The Hacienda Mission San Luis Rey



JULIAN ZAWACKI

East Village Place



JUDY BOWES

The Watermark at Almaden



SUSAN MYERS

The Fountains at Millbrook



WAYNE ALBRIGHT
*The Fountains
at Greenbriar*

Creative 2026 Inspiration



BILL FRENCH
The Watermark at Bellevue



JULIE MARSLAND
The Hacienda at the River



ANN JONES
The Hacienda at the Canyon



RUTH COLVIN
Joshua Springs Senior Living



LIZ DILLON
The Watermark at Marco Island



RUTH KOSTERS
Summit Senior Living



BETTY MAIER
The Fountains at Greenbriar



KAT YOUNG
Legacy at Clover Blossom



CAROL HAMMOND
The Hacienda Mission San Luis Rey

While some people create visual art to express something beyond words, a poet's gift is to turn the words themselves into art. Our featured poets share a glimpse into their souls, inspiring us with real emotions, universal questions, and a call to our higher selves.

A SPECIAL VALENTINE WISH

If only love sprang forth from us like streams break thru the earthen crust ... and each of us held out our hands to others in blind trust ... and words of comfort and wisdom tumbled from our lips ... and gentleness was passed from tip to fingertip ... and compassion could be read in the mirror of our eyes ... and the plea for understanding could be heard by everyone alive.

Then a calming of the spirit would enshroud us like a cloud ... and words of love, instead of rage, ring out so clear and loud.

And the precious gift of love that we so selfishly do hide could be passed from heart to heart never more feel trapped inside.



JOAN PIPER

East Village Place

A former elementary school teacher from Westfield, Massachusetts, Joan has been writing poetry for more than 50 years. She thanks her grade school teachers for instilling a passion for words. Writing is calming for Joan, and she's inspired to reflect on things happening in the world. The poem featured here was inspired by events at Kent State University.

MOTHERS

*How do you measure the love of a Mother?
Is it how much she cares for her son and daughter?*

*Mothers are loving, but also stern
Teaching her children everything they must learn.*

*Mothers can also be caring and gentle
They are sentimental and never judgmental*

*Mothers have a firm hand and lead the way
So that her children will understand and not go astray*

MOTHER

*M – She's MARVELOUS, MAJESTIC and blesses your soul
O – She's ORGANIZED and able to keep things in control
T – She's THOUGHTFUL and considerate, not unkind
H – She's HELPFUL to everyone and always refined
E – She's EFFICIENT, resourceful and proactive
R – She's RADIANT in spirit and not distracted*

*How do you measure a Mother's love?
It's knowing that she's getting her guidance from above.*

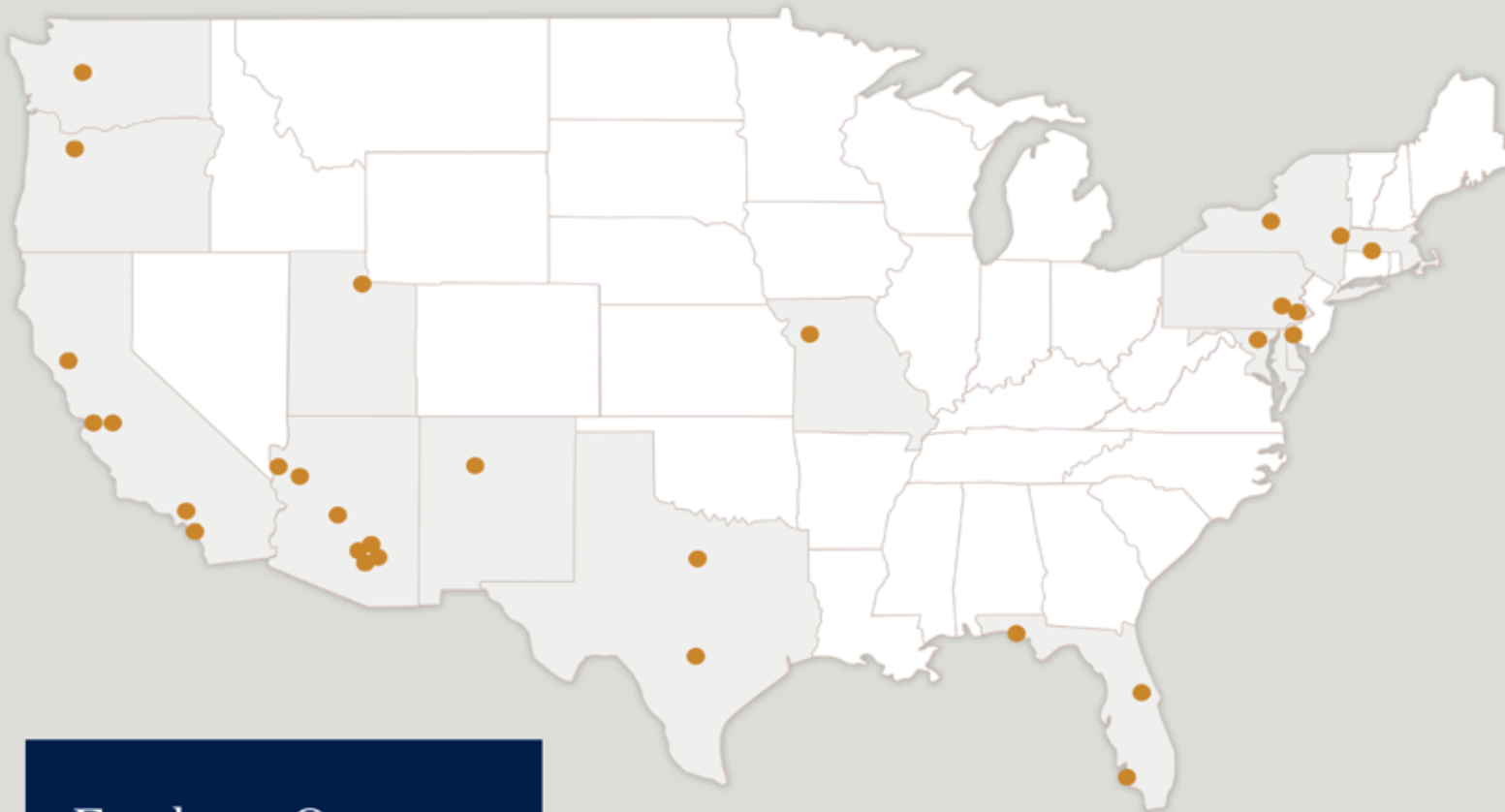


PATRICIA SMITH

The Sky Bridge at Town Center

In 1999, Patricia wrote her first poetry, and it's been flowing through her ever since. While she had a diverse administrative career, she's found great purpose in writing uplifting poems. Patricia wrote the one featured here specifically for mothers living in nursing homes. She says she writes whenever God places something meaningful in her spirit.

**about
the writers**



Explore Our Communities

Visit watermarkcommunities.com
or scan the QR code to learn more.



ARIZONA

Caliche Senior Living (CGC) Casa Grande
Joshua Springs Senior Living (BJS) Bullhead City
The Fountains at La Cholla (LCH) Tucson
The Hacienda at the Canyon® (THC) Tucson
The Hacienda at the River® (THR) Tucson
The Watermark at Oro Valley (OVO) Oro Valley
White Cliffs Senior Living (KWC) Kingman

CALIFORNIA

Sonrisa Senior Living (RSA/RSS) Roseville
The Hacienda Mission San Luis Rey (OWO)
Oceanside
The Watermark at Almaden (SJA) San Jose
The Watermark at San Jose (SJB) San Jose
Watermark Laguna Niguel (LNW) Laguna Niguel

DELAWARE

Rockland Place (RKP) Wilmington

FLORIDA

The Watermark at Marco Island (MIW)
Marco Island
The Watermark at Vistawilla (WSV)
Winter Springs
Watersound Fountains™ (WWF) Inlet Beach

MARYLAND

The Sky Bridge at Town Center (LSB)
Upper Marlboro

MASSACHUSETTS

East Village Place (EVP) East Longmeadow

MISSOURI

The Fountains at Greenbriar (GBR)
Independence

NEW MEXICO

The Watermark at Cherry Hills (ACH)
Albuquerque

NEW YORK

Legacy at Clover Blossom (RCB) Rochester
The Fountains at Millbrook (MLB) Millbrook

OREGON

The Watermark at the Pearl (PPP) Portland

PENNSYLVANIA

Blue Bell Place (BBP) Blue Bell
Rose Tree Place (RTP) Media

TEXAS

The Preston of the Park Cities (DPC) Dallas
The Watermark at Southpark Meadows (ASP)
Austin

UTAH

Summit Senior Living (KSL) Salt Lake City

WASHINGTON

The Watermark at Bellevue (BWB/BWK) Bellevue